

A solid green horizontal bar spanning the width of the page.

Vista Fire Protection District

2022 Districting
2nd Draft Map Hearing

July 13, 2022

Agenda

Things we will cover:

- Traditional Districting/Redistricting Principles
- At-large map and census data
- Draft maps
 - A, B, C
 - NEW: B2
- Public Hearing Schedule

Traditional Redistricting Principles

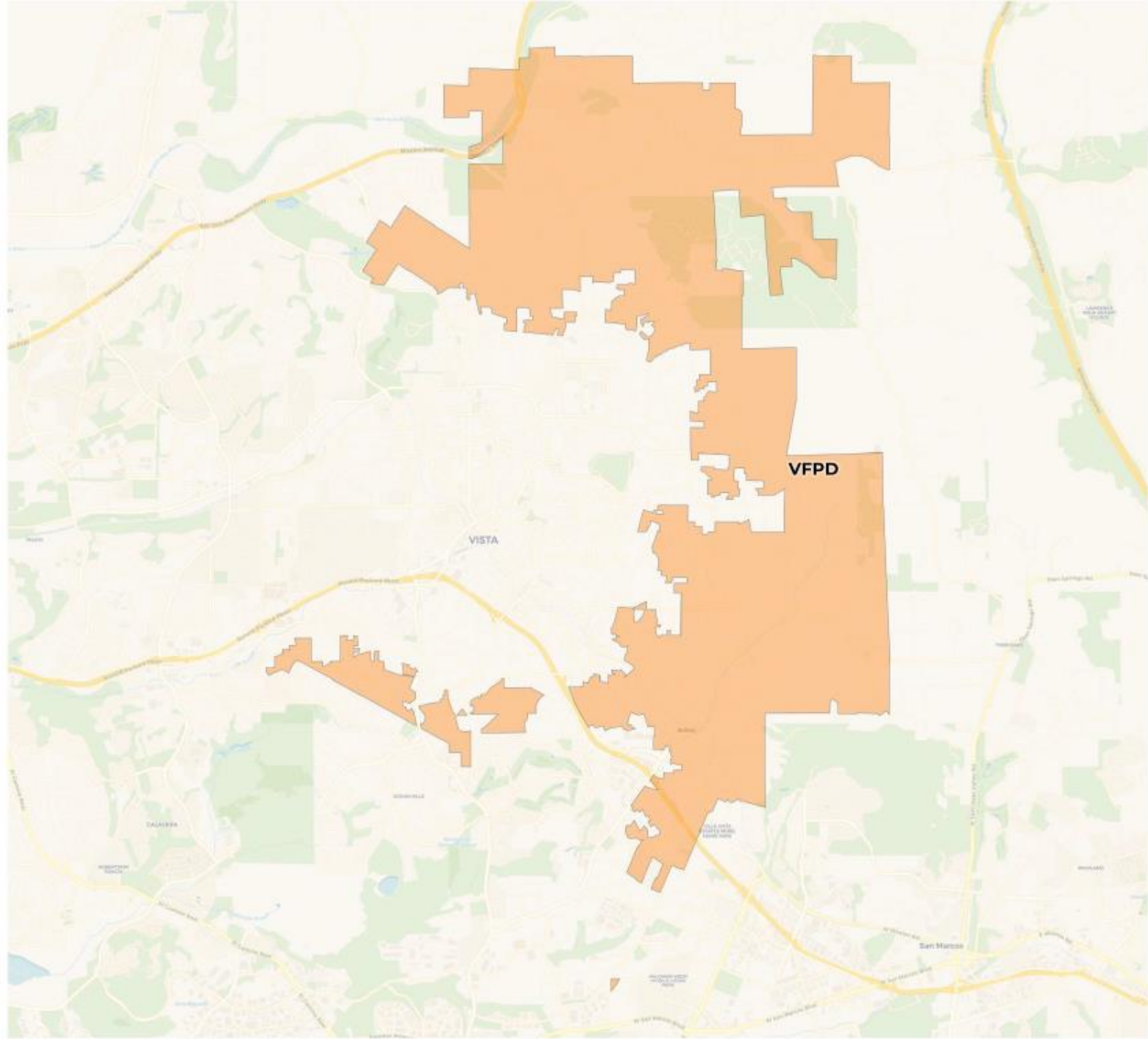
Guiding districting/redistricting principles that drive the process

There are a number of criteria that have been used nationally and upheld by courts.

- Relatively equal size - people, not citizens
- Contiguous – districts should not hop/jump
- Maintain “*communities of interest*”
- Follow city and census designated place boundaries
- Keep zones compact – appearance/function

**REDISTRICTING
PARTNERS**

**Vista Fire Protection
District
At Large**



2020 Census

	VFPD
Population	19,008
Deviation	0
Deviation %	0.0%
Other	11,371
Other %	59.8%
Latino	6,644
Latino %	35.0%
Asian	692
Asian %	3.6%
Black	301
Black %	1.6%

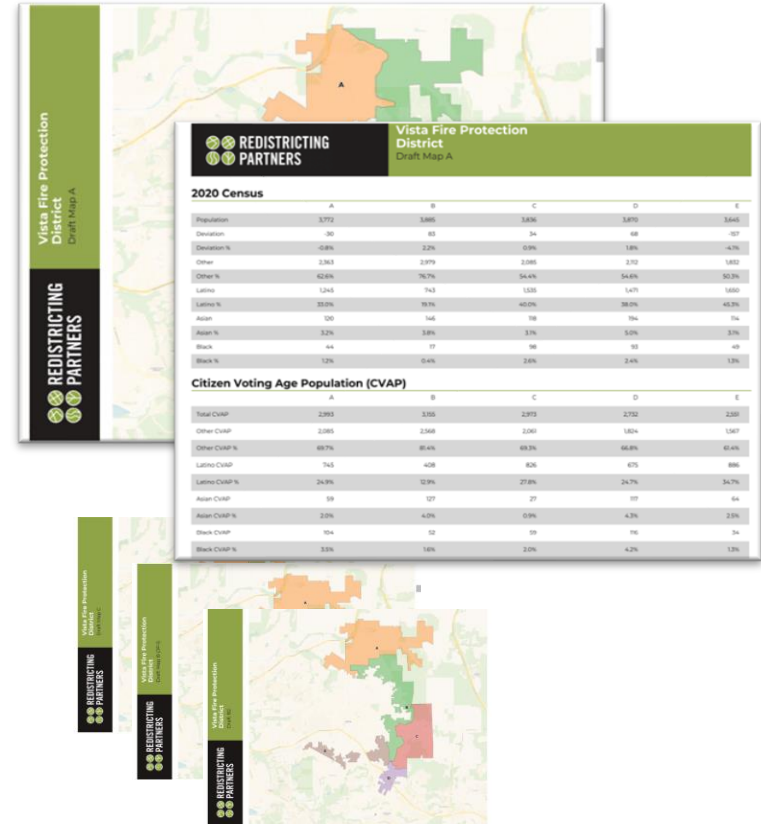
Citizen Voting Age Population (CVAP)

	VFPD
Total CVAP	14,404
Other CVAP	10,105
Other CVAP %	70.2%
Latino CVAP	3,540
Latino CVAP %	24.6%
Asian CVAP	394
Asian CVAP %	2.7%
Black CVAP	365
Black CVAP %	2.5%

Draft Map Plans

Each draft plan is provided with both a PDF and Online Web-based format

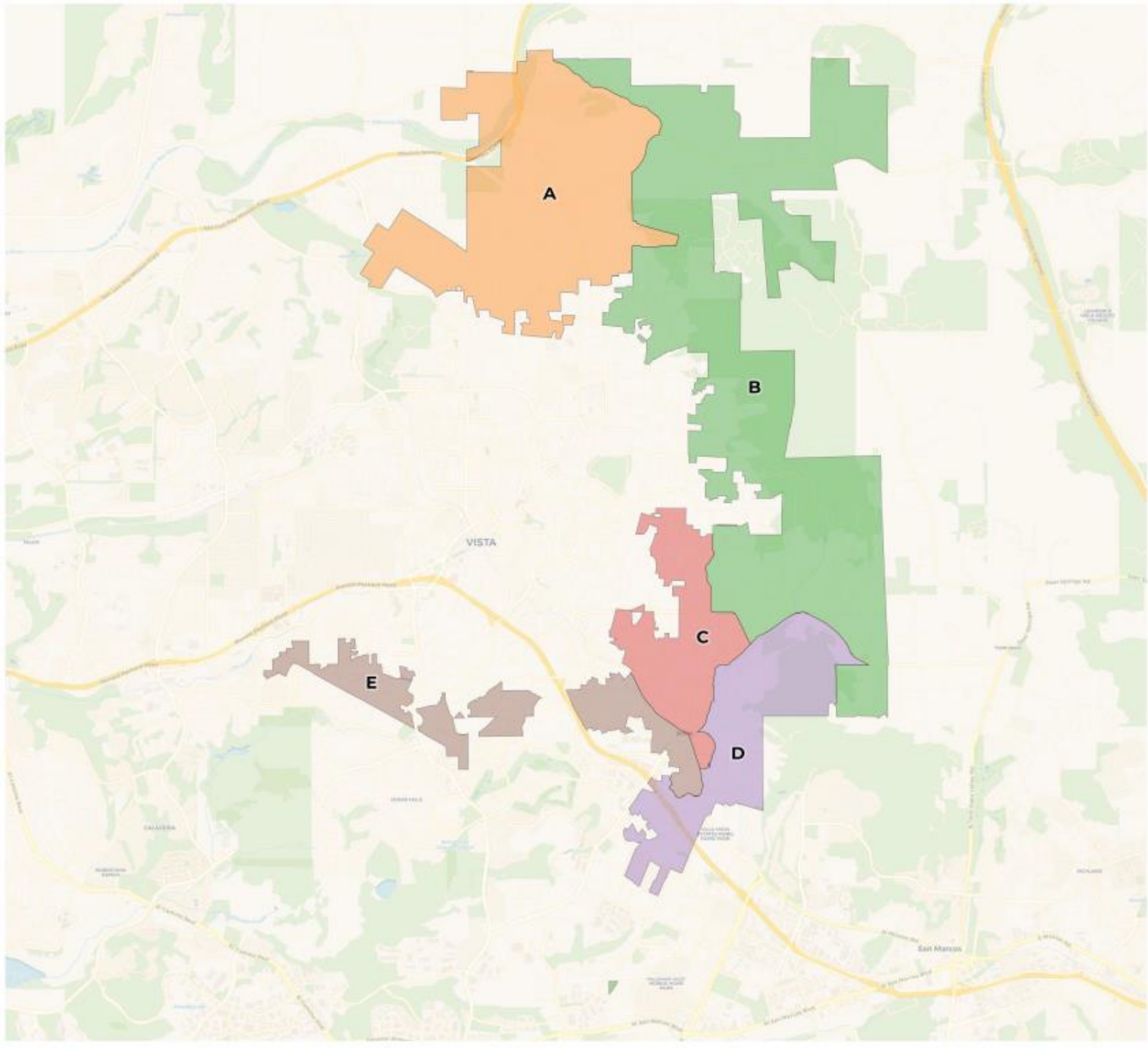
- **Draft Map A** – Splits the district vertically
- **Draft Map B** – Based off of JP-1 Map and districting principles
- **Draft Map B2** – Maintain a community of interest in Division 3
- **Draft Map C** – splits top of district horizontally and gives board a different option on how to split the lower half of the district





**REDISTRICTING
PARTNERS**

**Vista Fire Protection
District
Draft Map A**



2020 Census

	A	B	C	D	E
Population	3,772	3,885	3,836	3,870	3,645
Deviation	-30	83	34	68	-157
Deviation %	-0.8%	2.2%	0.9%	1.8%	-4.1%
Other	2,363	2,979	2,085	2,112	1,832
Other %	62.6%	76.7%	54.4%	54.6%	50.3%
Latino	1,245	743	1,535	1,471	1,650
Latino %	33.0%	19.1%	40.0%	38.0%	45.3%
Asian	120	146	118	194	114
Asian %	3.2%	3.8%	3.1%	5.0%	3.1%
Black	44	17	98	93	49
Black %	1.2%	0.4%	2.6%	2.4%	1.3%

Citizen Voting Age Population (CVAP)

	A	B	C	D	E
Total CVAP	2,993	3,155	2,973	2,732	2,551
Other CVAP	2,085	2,568	2,061	1,824	1,567
Other CVAP %	69.7%	81.4%	69.3%	66.8%	61.4%
Latino CVAP	745	408	826	675	886
Latino CVAP %	24.9%	12.9%	27.8%	24.7%	34.7%
Asian CVAP	59	127	27	117	64
Asian CVAP %	2.0%	4.0%	0.9%	4.3%	2.5%
Black CVAP	104	52	59	116	34
Black CVAP %	3.5%	1.6%	2.0%	4.2%	1.3%

2020 Census

	A	B	C	D	E
Population	3,772	3,885	3,836	3,870	3,645
Deviation	-30	83	34	68	-157
Deviation %	-0.8%	2.2%	0.9%	1.8%	-4.1%
Other	2,363	2,979	2,085	2,112	1,832
Other %	62.6%	76.7%	54.4%	54.6%	50.3%
Latino	1,245	1,471	1,471	1,471	1,650
Latino %	33.0%	38.0%	38.0%	38.0%	45.3%
Asian	120	146	118	194	114
Asian %	3.2%	3.8%	3.1%	5.0%	3.1%
Black	44	17	98	93	49
Black %	1.2%	0.4%	2.6%	2.4%	1.3%

Total Plan Deviation: 6.3%

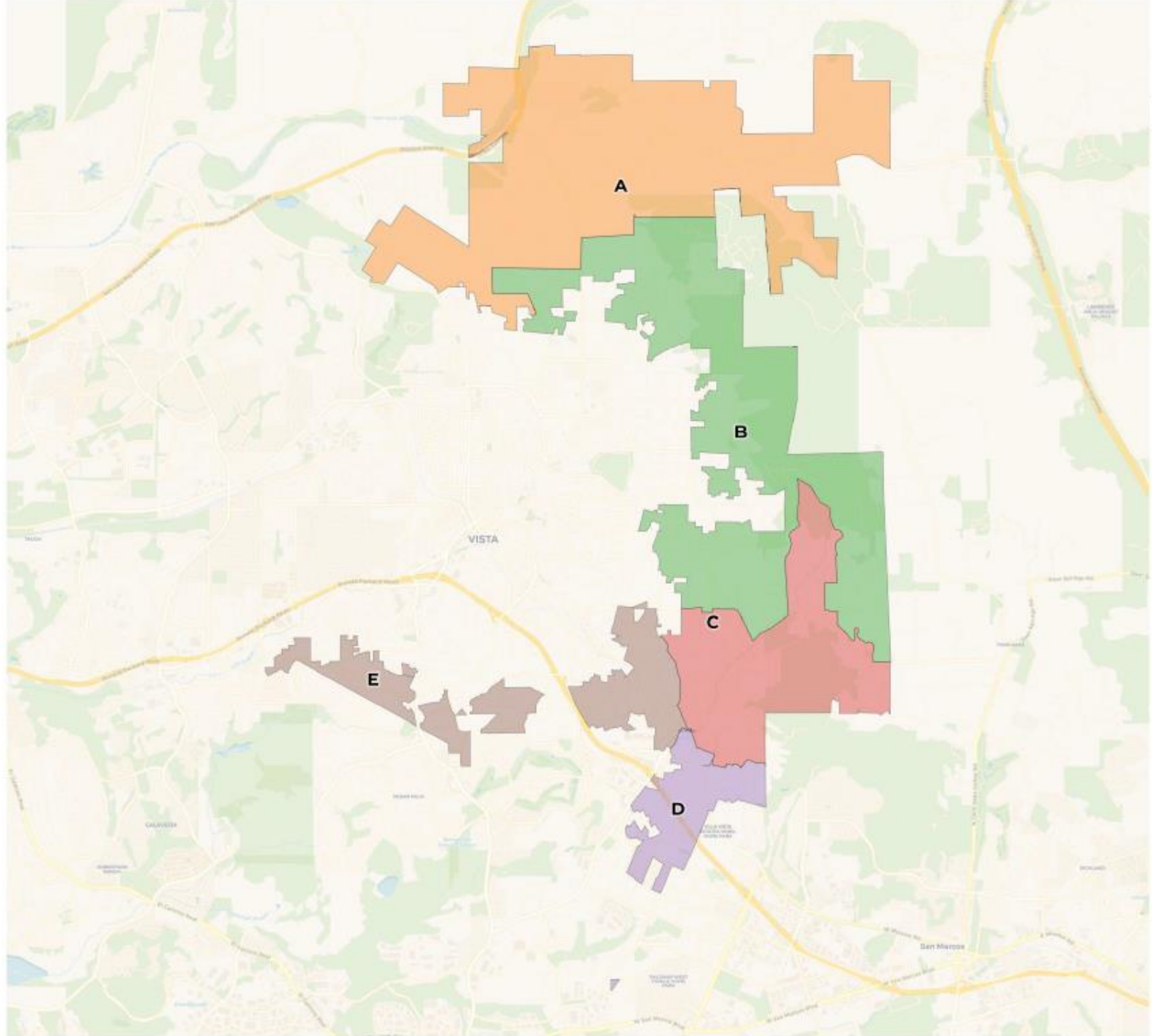
Citizen Voting Age Population (CVAP)

	A	B	C	D	E
Total CVAP	2,993	3,155	2,973	2,732	2,551
Other CVAP	2,085	2,568	2,061	1,824	1,567
Other CVAP %	69.7%	81.4%	69.3%	66.8%	61.4%
Latino CVAP	745	408	826	675	886
Latino CVAP %	24.9%	12.9%	27.8%	24.7%	34.7%
Asian CVAP	59	127	27	117	64
Asian CVAP %	2.0%	4.0%	0.9%	4.3%	2.5%
Black CVAP	104	52	59	116	34
Black CVAP %	3.5%	1.6%	2.0%	4.2%	1.3%

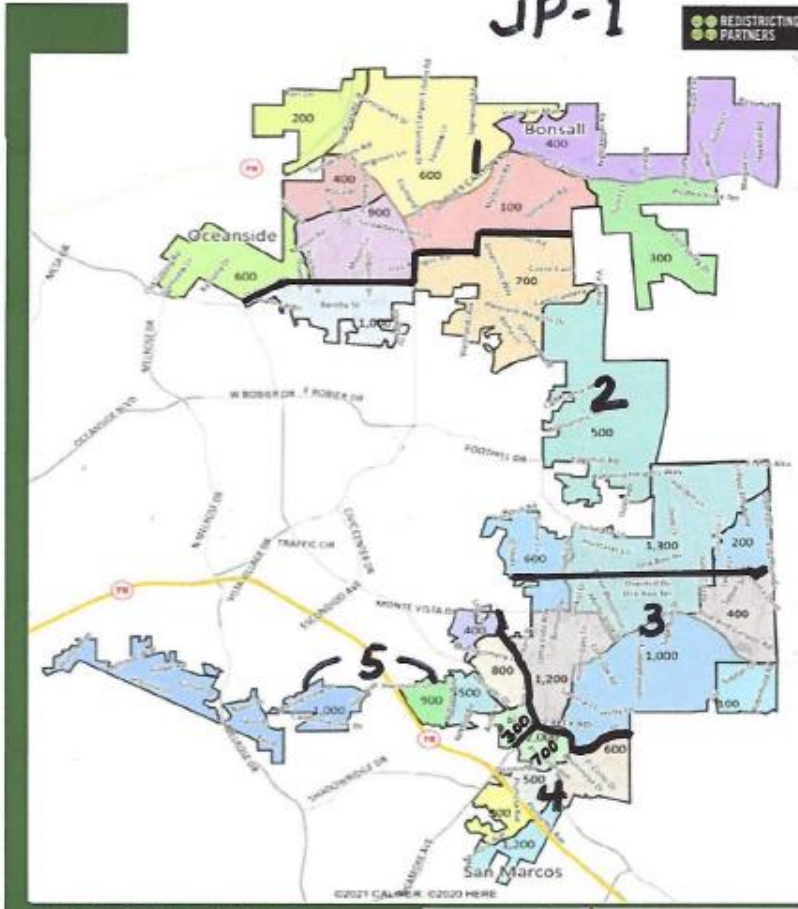


**REDISTRICTING
PARTNERS**

**Vista Fire Protection
District**
Draft Map B (JP-1)



JP-1



VISTA FPD DISTRICTING ACTIVITY

THE RULES

- Create a single district or create a full five district plan.
- New districts should have a population of around 3,800.
- The largest district should be no more than 180 people greater than the smallest district.
- Make sure each part of a district is contiguous or that each part of the district is linked together. The island north of Sequoia Ln can be linked to the area to its east.

ABOUT THE BLOCKS

Each of these blocks is drawn within the district's existing boundaries and is based upon the 2010 Census blocks. The population used is the total census population as defined by the 2010 Census, with adjustments to reallocate the prison population. Population totals are rounded up to the nearest "100" to allow for easier construction of a district.

Write in the population estimates for each of your drawn districts.

- 3,800 Target Population Per District

DISTRICT 1	3500
DISTRICT 2	± 3500
DISTRICT 3	± 3500
DISTRICT 4	3800
DISTRICT 5	3600

2020 Census

	A	B	C	D	E
Population	3,804	3,833	3,765	3,745	3,861
Deviation	2	31	-37	-57	59
Deviation %	0.1%	0.8%	-1.0%	-1.5%	1.6%
Other	2,534	2,745	2,274	1,532	2,286
Other %	66.6%	71.6%	60.4%	40.9%	59.2%
Latino	1,093	922	1,274	1,949	1,406
Latino %	28.7%	24.1%	33.8%	52.0%	36.4%
Asian	139	127	135	171	120
Asian %	3.7%	3.3%	3.6%	4.6%	3.1%
Black	38	39	82	93	49
Black %	1.0%	1.0%	2.2%	2.5%	1.3%

Citizen Voting Age Population (CVAP)

	A	B	C	D	E
Total CVAP	3,185	2,957	2,816	2,486	2,960
Other CVAP	2,292	2,332	2,018	1,336	2,127
Other CVAP %	72.0%	78.9%	71.7%	53.7%	71.9%
Latino CVAP	724	444	696	888	788
Latino CVAP %	22.7%	15.0%	24.7%	35.7%	26.6%
Asian CVAP	88	102	36	142	26
Asian CVAP %	2.8%	3.4%	1.3%	5.7%	0.9%
Black CVAP	81	79	66	120	19
Black CVAP %	2.5%	2.7%	2.3%	4.8%	0.6%

2020 Census

	A	B	C	D	E
Population	3,804	3,833	3,765	3,745	3,861
Deviation	2	31	-37	-57	59
Deviation %	0.1%	0.8%	-1.0%	-1.5%	1.6%
Other	2,534	2,745	2,274	1,552	2,286
Other %	66.6%	71.6%	60.4%	41.5%	59.2%
Latino	1,093	1,110	1,080	919	1,406
Latino %	28.7%	28.9%	28.7%	24.5%	36.4%
Asian	139	127	135	171	120
Asian %	3.7%	3.3%	3.6%	4.6%	3.1%
Black	38	39	82	93	49
Black %	1.0%	1.0%	2.2%	2.5%	1.3%

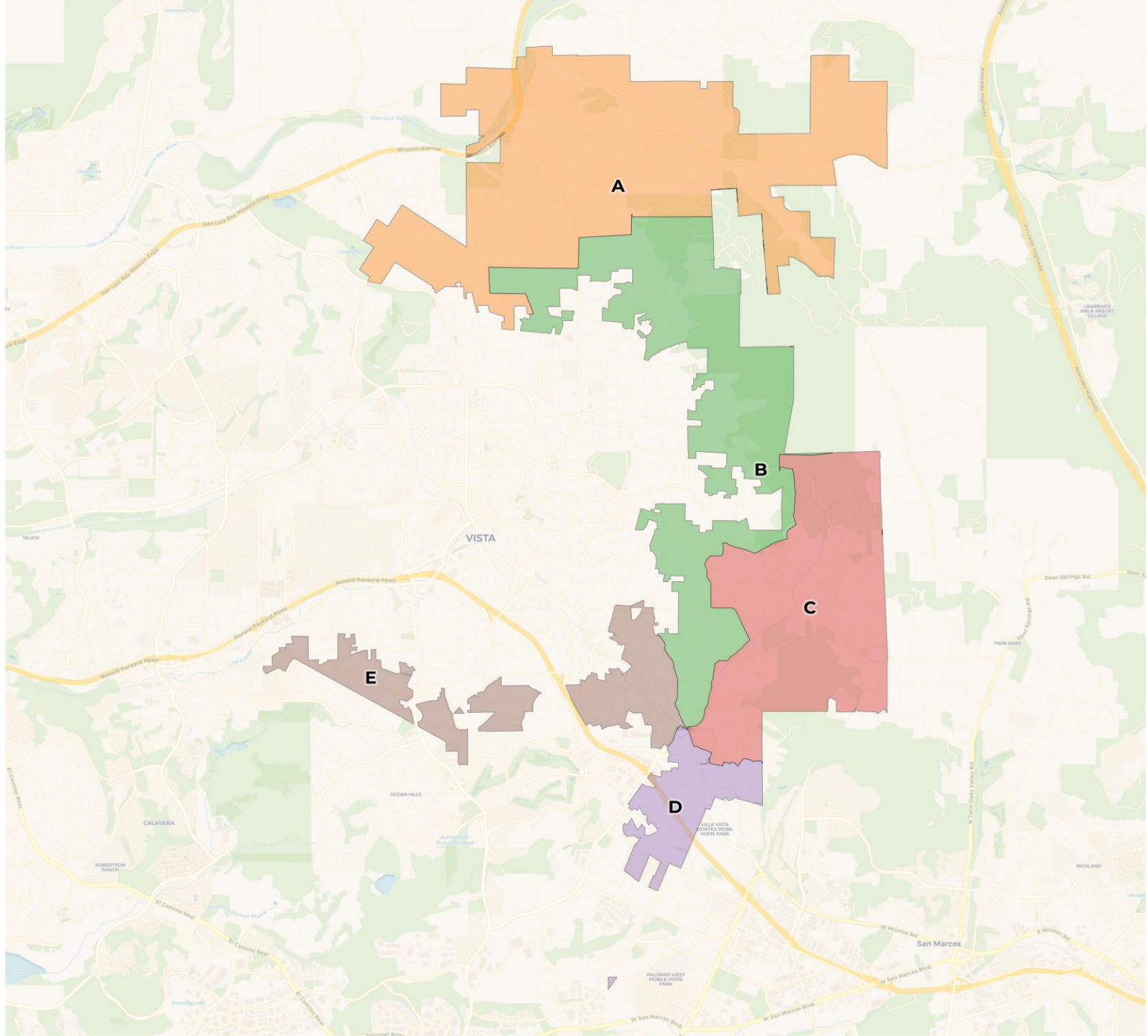
Total Plan Deviation: 3.1%

Citizen Voting Age Population (CVAP)

	A	B	C	D	E
Total CVAP	3,185	2,957	2,816	2,486	2,960
Other CVAP	2,292	2,332	2,018	1,336	2,127
Other CVAP %	72.0%	78.9%	71.7%	53.7%	71.9%
Latino CVAP	724	444	696	888	788
Latino CVAP %	22.7%	15.0%	24.7%	35.7%	26.6%
Asian CVAP	88	102	36	142	26
Asian CVAP %	2.8%	3.4%	1.3%	5.7%	0.9%
Black CVAP	81	79	66	120	19
Black CVAP %	2.5%	2.7%	2.3%	4.8%	0.6%

Vista Fire Protection District Draft B2

Draft B2

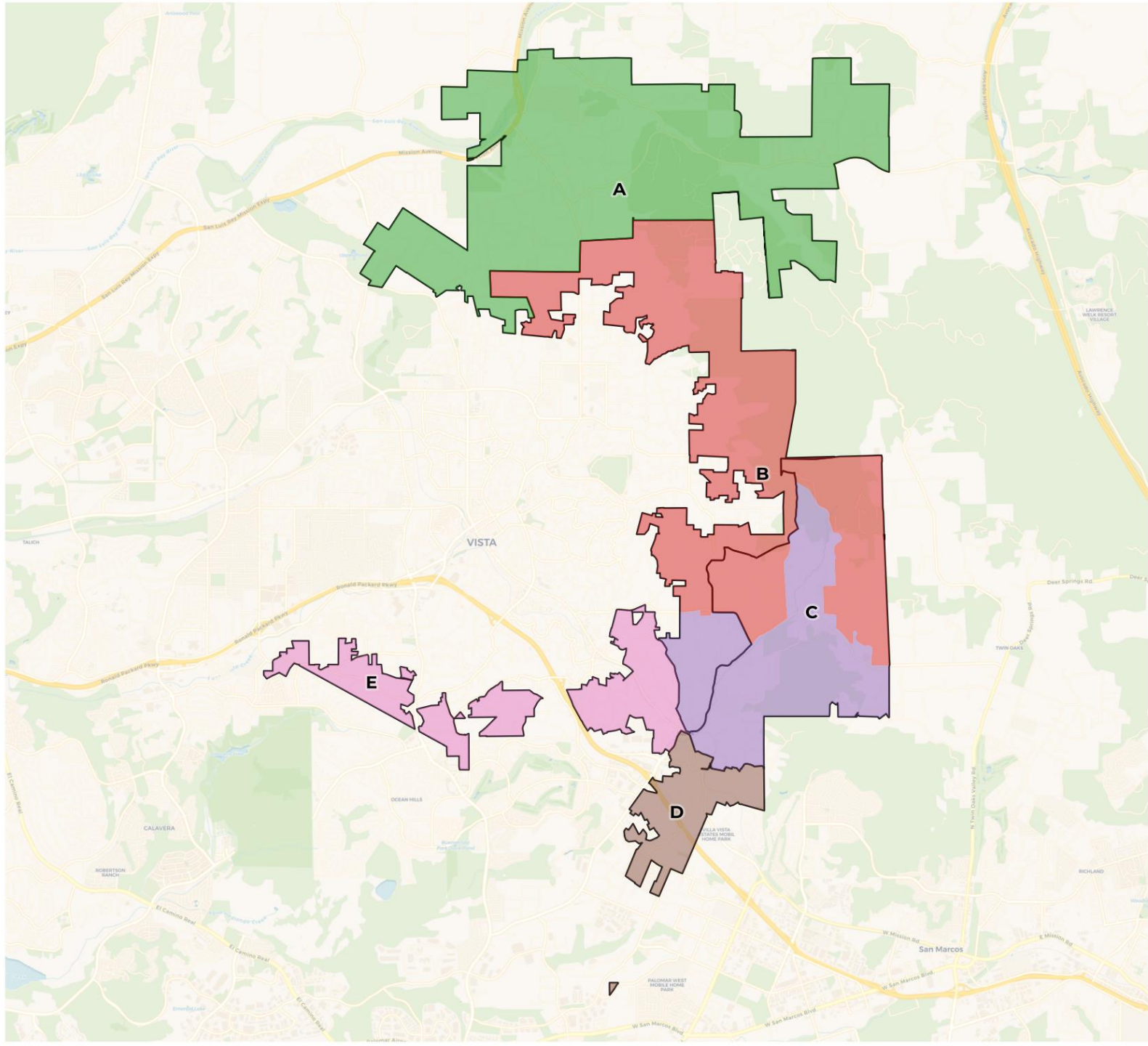




**REDISTRICTING
PARTNERS**

Vista Fire Protection District

Draft Plan B2 with B overlay



2020 Census

	A	B	C	D	E
Population	3,804	3,712	3,886	3,745	3,861
Deviation	2	-90	84	-57	59
Deviation %	0.1%	-2.4%	2.2%	-1.5%	1.6%
Other	2,534	2,511	2,508	1,532	2,286
Other %	66.6%	67.6%	64.5%	40.9%	59.2%
Latino	1,093	1,045	1,151	1,949	1,406
Latino %	28.7%	28.2%	29.6%	52.0%	36.4%
Asian	139	106	156	171	120
Asian %	3.7%	2.9%	4.0%	4.6%	3.1%
Black	38	50	71	93	49
Black %	1.0%	1.3%	1.8%	2.5%	1.3%

Citizen Voting Age Population (CVAP)

	A	B	C	D	E
Total CVAP	3,185	2,972	2,801	2,486	2,960
Other CVAP	2,292	2,281	2,069	1,336	2,127
Other CVAP %	72.0%	76.7%	73.9%	53.7%	71.9%
Latino CVAP	724	550	590	888	788
Latino CVAP %	22.7%	18.5%	21.1%	35.7%	26.6%
Asian CVAP	88	62	76	142	26
Asian CVAP %	2.8%	2.1%	2.7%	5.7%	0.9%
Black CVAP	81	79	66	120	19
Black CVAP %	2.5%	2.7%	2.4%	4.8%	0.6%

2020 Census

	A	B	C	D	E
Population	3,804	3,712	3,886	3,745	3,861
Deviation	2	-90	84	-57	59
Deviation %	0.1%	-2.4%	2.2%	-1.5%	1.6%
Other	2,534	2,511	2,508	1,532	2,286
Other %	66.6%	Total deviation: 4.6%			59.2%
Latino	1,093	1,043	1,131	1,949	1,406
Latino %	28.7%	28.2%	29.6%	52.0%	36.4%
Asian	139	106	156	171	120
Asian %	3.7%	2.9%	4.0%	4.6%	3.1%
Black	38	50	71	93	49
Black %	1.0%	1.3%	1.8%	2.5%	1.3%

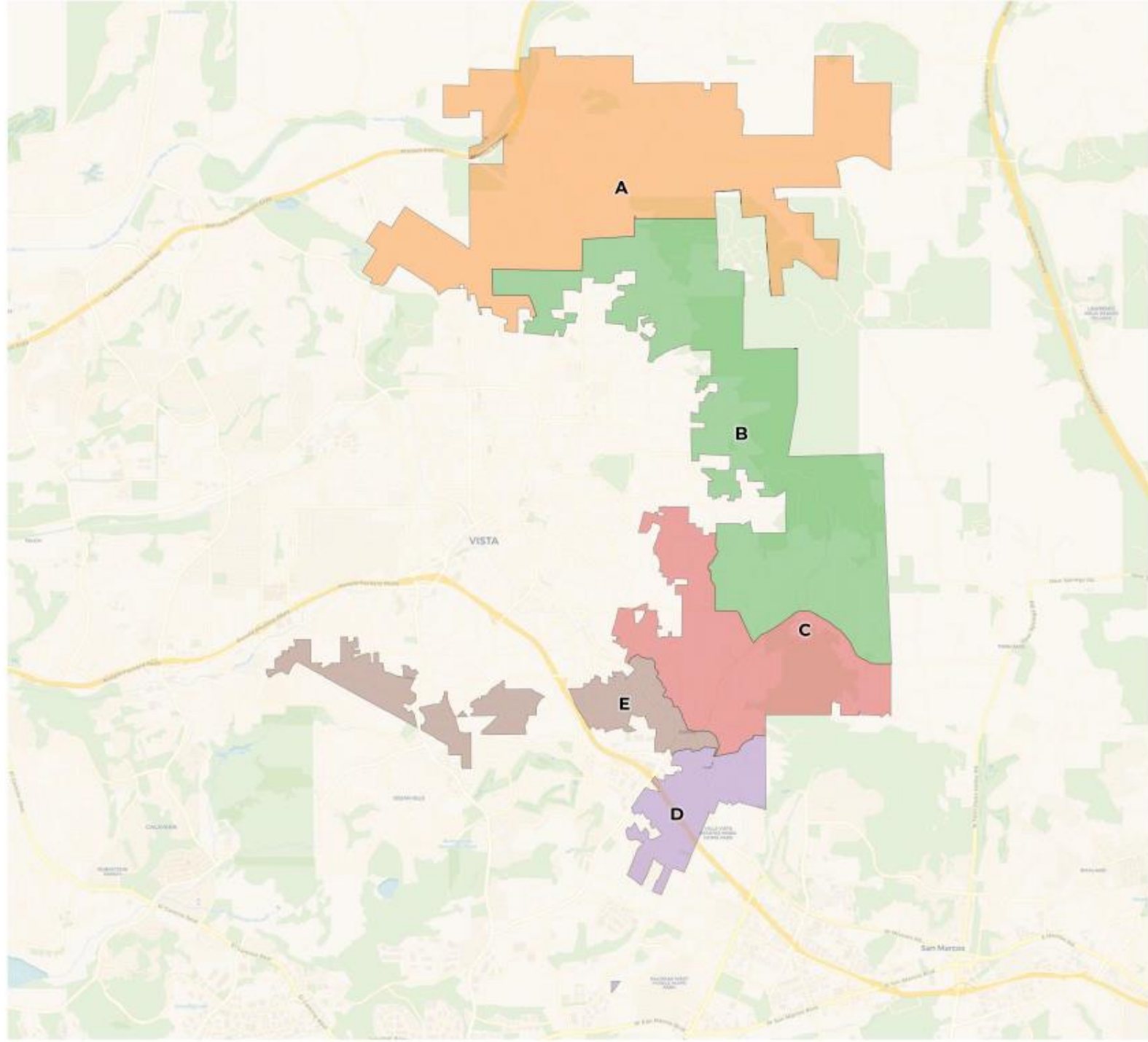
Citizen Voting Age Population (CVAP)

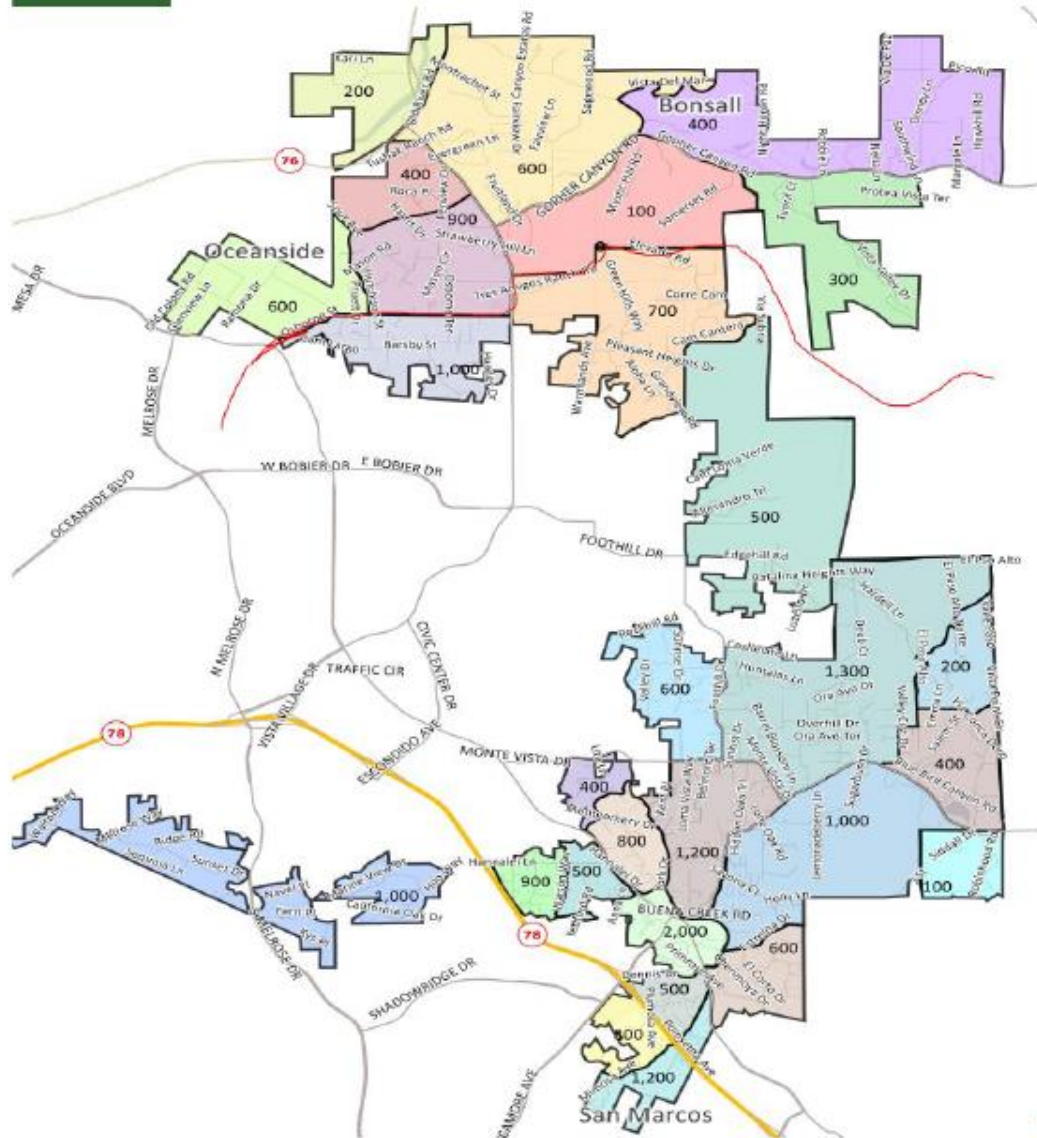
	A	B	C	D	E
Total CVAP	3,185	2,972	2,801	2,486	2,960
Other CVAP	2,292	2,281	2,069	1,336	2,127
Other CVAP %	72.0%	76.7%	73.9%	53.7%	71.9%
Latino CVAP	724	550	590	888	788
Latino CVAP %	22.7%	18.5%	21.1%	35.7%	26.6%
Asian CVAP	88	62	76	142	26
Asian CVAP %	2.8%	2.1%	2.7%	5.7%	0.9%
Black CVAP	81	79	66	120	19
Black CVAP %	2.5%	2.7%	2.4%	4.8%	0.6%



**REDISTRICTING
PARTNERS**

**Vista Fire Protection
District
Draft Map C**





2020 Census

	A	B	C	D	E
Population	3,804	3,764	3,662	3,833	3,945
Deviation	2	-38	-140	31	143
Deviation %	0.1%	-1.0%	-3.7%	0.8%	3.8%
Other	2,534	2,751	2,470	1,588	2,028
Other %	66.6%	73.1%	67.4%	41.4%	51.4%
Latino	1,093	870	1,000	1,994	1,687
Latino %	28.7%	23.1%	27.3%	52.0%	42.8%
Asian	139	120	135	159	139
Asian %	3.7%	3.2%	3.7%	4.1%	3.5%
Black	38	23	57	92	91
Black %	1.0%	0.6%	1.6%	2.4%	2.3%

Citizen Voting Age Population (CVAP)

	A	B	C	D	E
Total CVAP	3,185	2,906	2,833	2,562	2,918
Other CVAP	2,292	2,314	2,223	1,399	1,877
Other CVAP %	72.0%	79.6%	78.5%	54.6%	64.3%
Latino CVAP	724	421	550	920	925
Latino CVAP %	22.7%	14.5%	19.4%	35.9%	31.7%
Asian CVAP	88	96	38	129	43
Asian CVAP %	2.8%	3.3%	1.3%	5.0%	1.5%
Black CVAP	81	75	22	114	73
Black CVAP %	2.5%	2.6%	0.8%	4.4%	2.5%

2020 Census

	A	B	C	D	E
Population	3,804	3,764	3,662	3,833	3,945
Deviation	2	-38	-140	31	143
Deviation %	0.1%	-1.0%	-3.7%	0.8%	3.8%
Other	2,534	2,751	2,470	1,588	2,028
Other %	66.6%	73.1%	67.4%	41.4%	51.4%
Latino	1,093			1,994	1,687
Latino %	28.7%			52.0%	42.8%
Asian	139	120	135	159	139
Asian %	3.7%	3.2%	3.7%	4.1%	3.5%
Black	38	23	57	92	91
Black %	1.0%	0.6%	1.6%	2.4%	2.3%

Total Plan Deviation is 7.5%

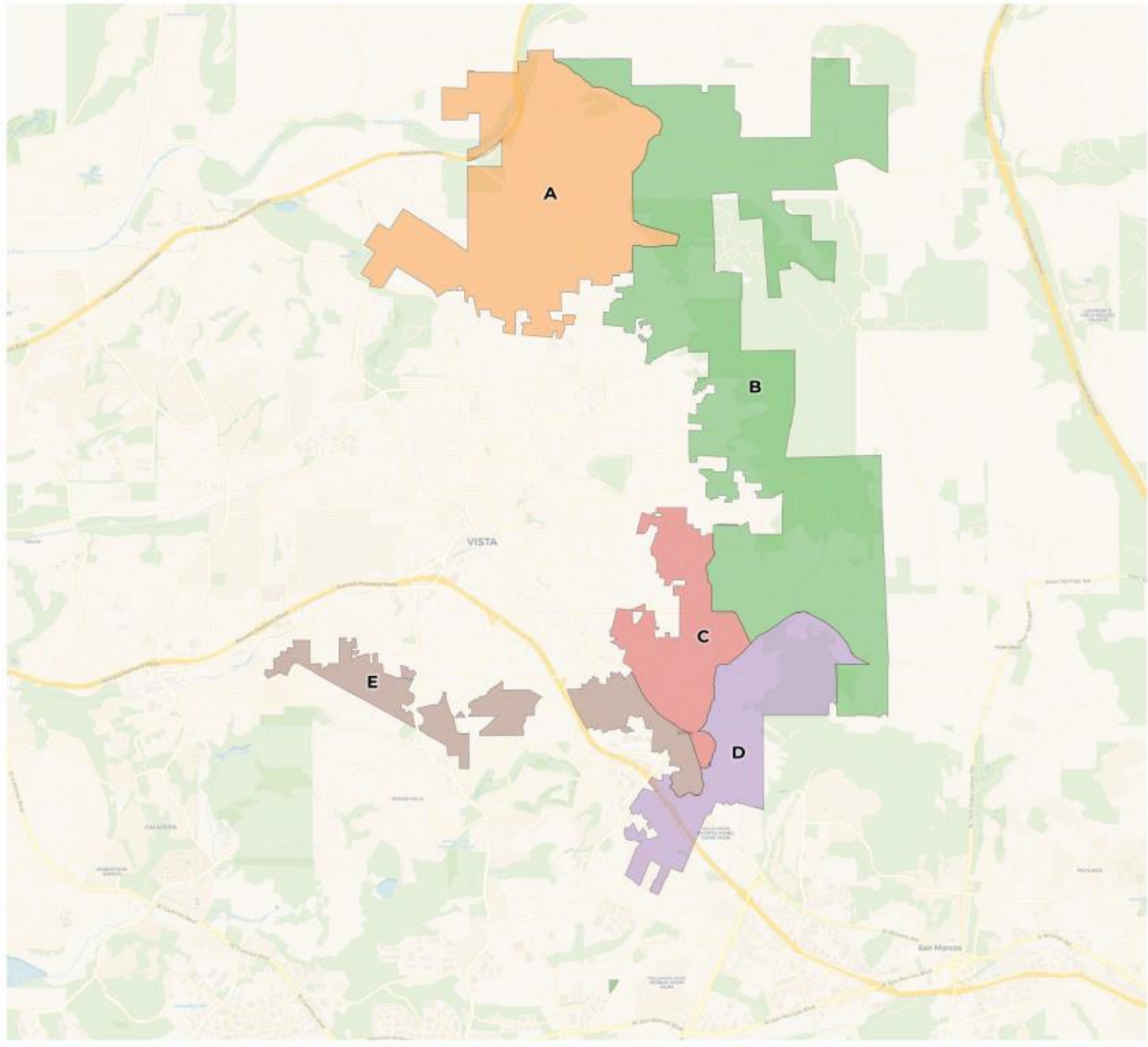
Citizen Voting Age Population (CVAP)

	A	B	C	D	E
Total CVAP	3,185	2,906	2,833	2,562	2,918
Other CVAP	2,292	2,314	2,223	1,399	1,877
Other CVAP %	72.0%	79.6%	78.5%	54.6%	64.3%
Latino CVAP	724	421	550	920	925
Latino CVAP %	22.7%	14.5%	19.4%	35.9%	31.7%
Asian CVAP	88	96	38	129	43
Asian CVAP %	2.8%	3.3%	1.3%	5.0%	1.5%
Black CVAP	81	75	22	114	73
Black CVAP %	2.5%	2.6%	0.8%	4.4%	2.5%



**REDISTRICTING
PARTNERS**

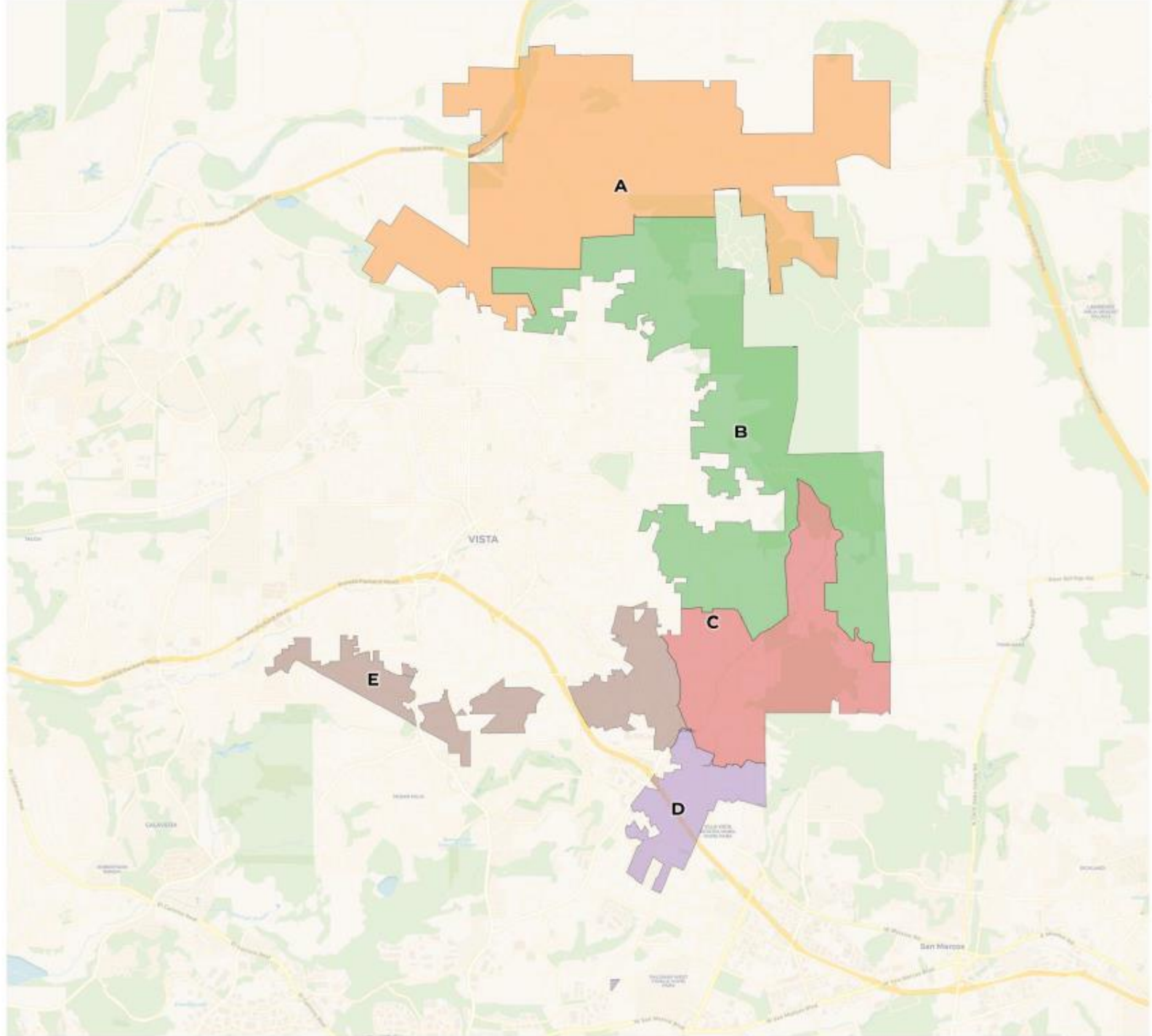
**Vista Fire Protection
District**
Draft Map A





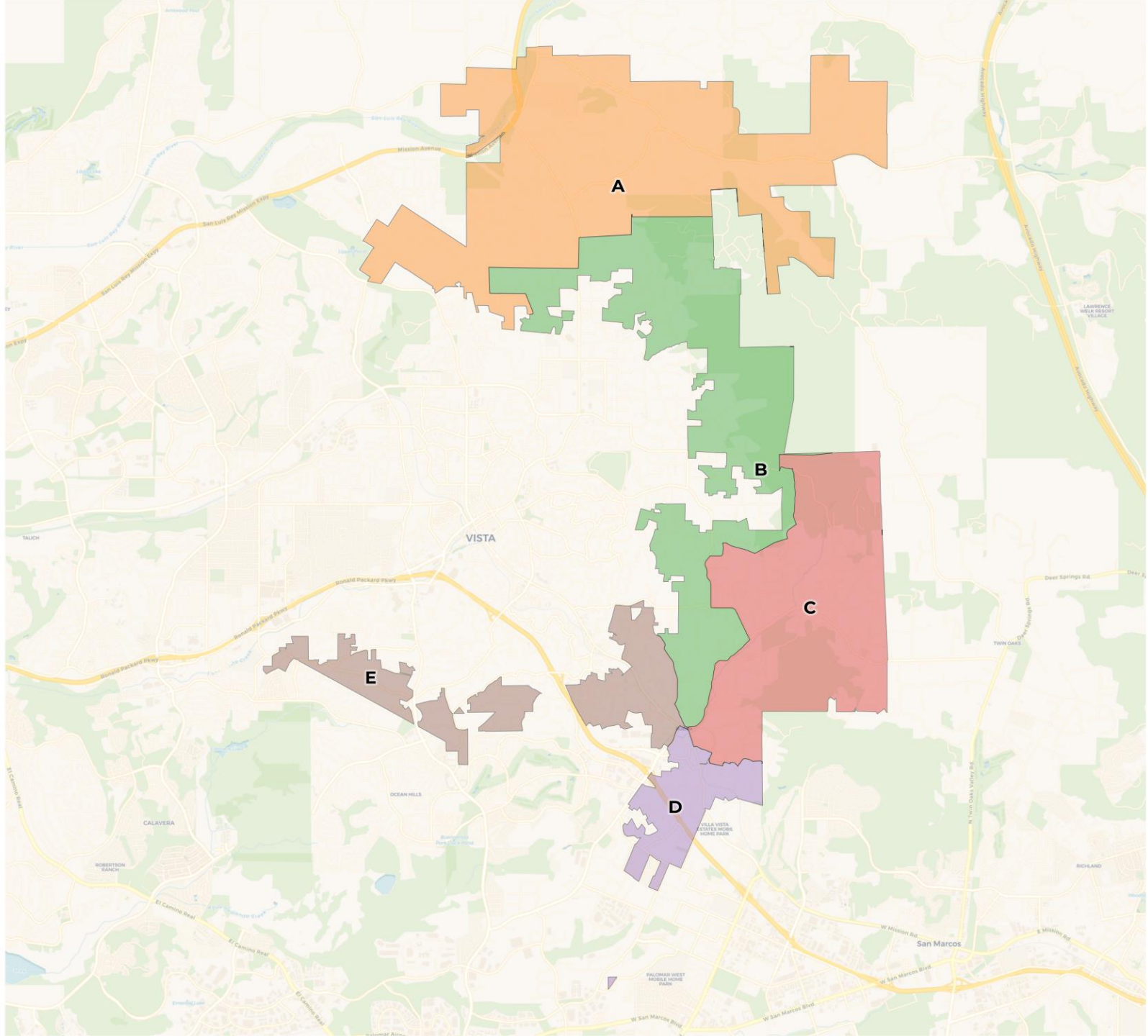
**REDISTRICTING
PARTNERS**

**Vista Fire Protection
District**
Draft Map B (JP-1)



Vista Fire Protection District Draft B2

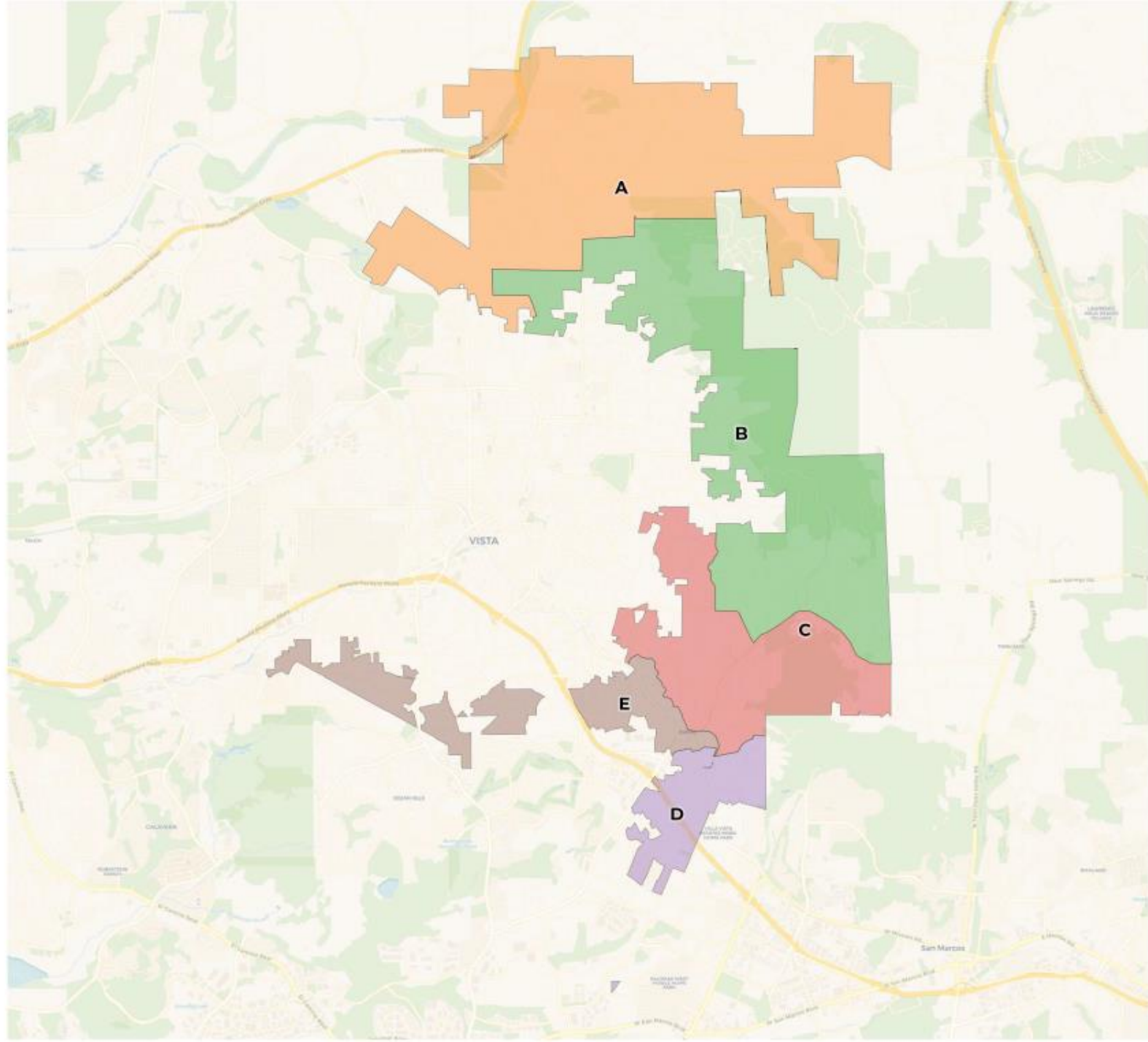
Draft B2





**REDISTRICTING
PARTNERS**

**Vista Fire Protection
District**
Draft Map C



What's Next

The Board can make use of these mapping options in a number of ways.

- **Identify preferred plan(s)**
- **Suggest possible changes** – adjustments can be made to any of the draft plans.
- **Provide direction** for the preparation of new draft map(s)



Vista Fire Protection District Districting

Timeline for Upcoming Meetings

May 11 th	1 st Public Hearing – Districting 101
May 25 th	2 nd Public Hearing – Communities of Interest
June 8 th	3 rd Public Hearing with Map Presentation
July 13th	4th Public Hearing with Revised Maps
August 10 th	5 th Public Hearing with Final Vote on Map



**REDISTRICTING
PARTNERS**