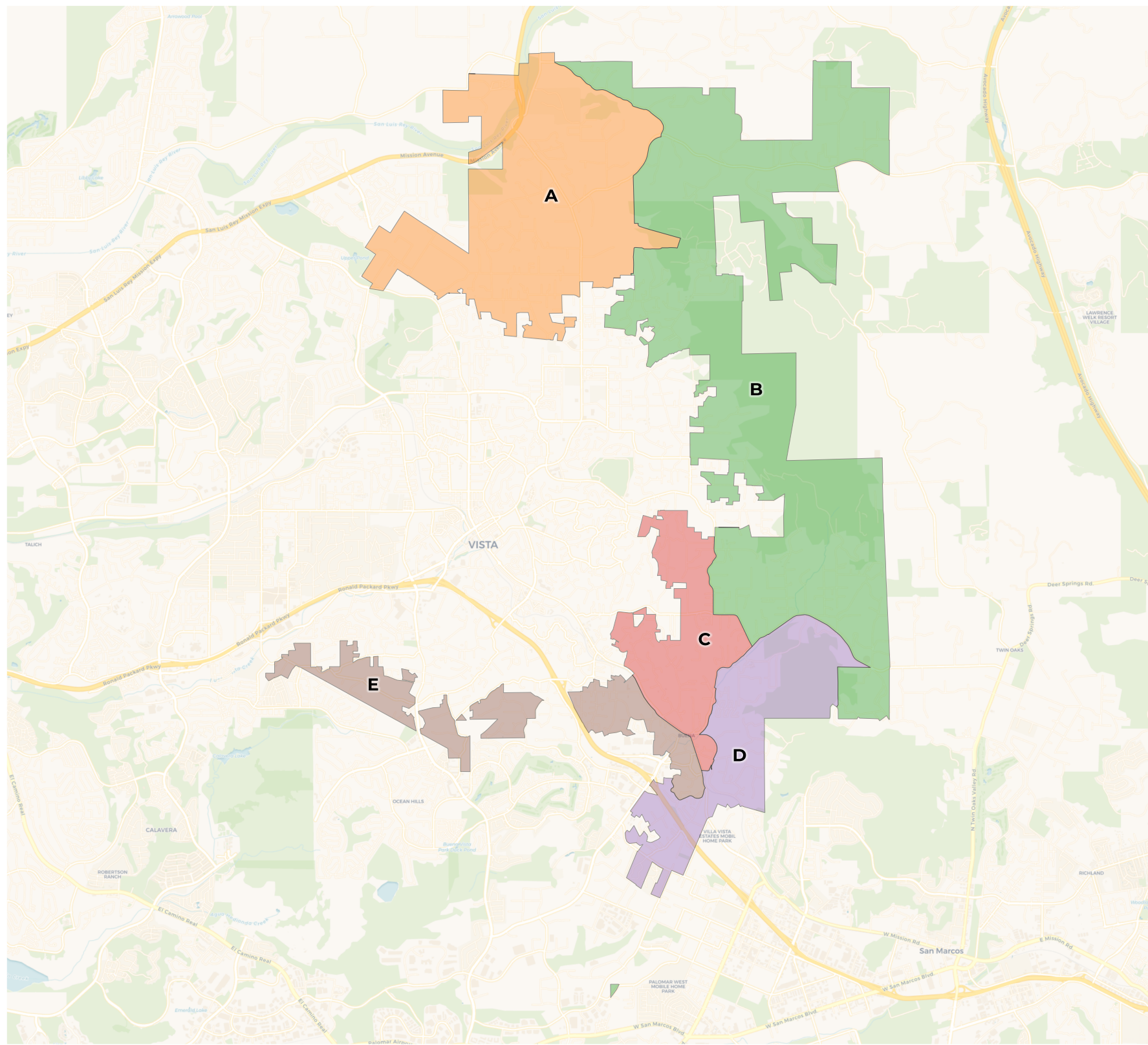


Vista Fire Protection District

Draft Map A

REDISTRICTING PARTNERS



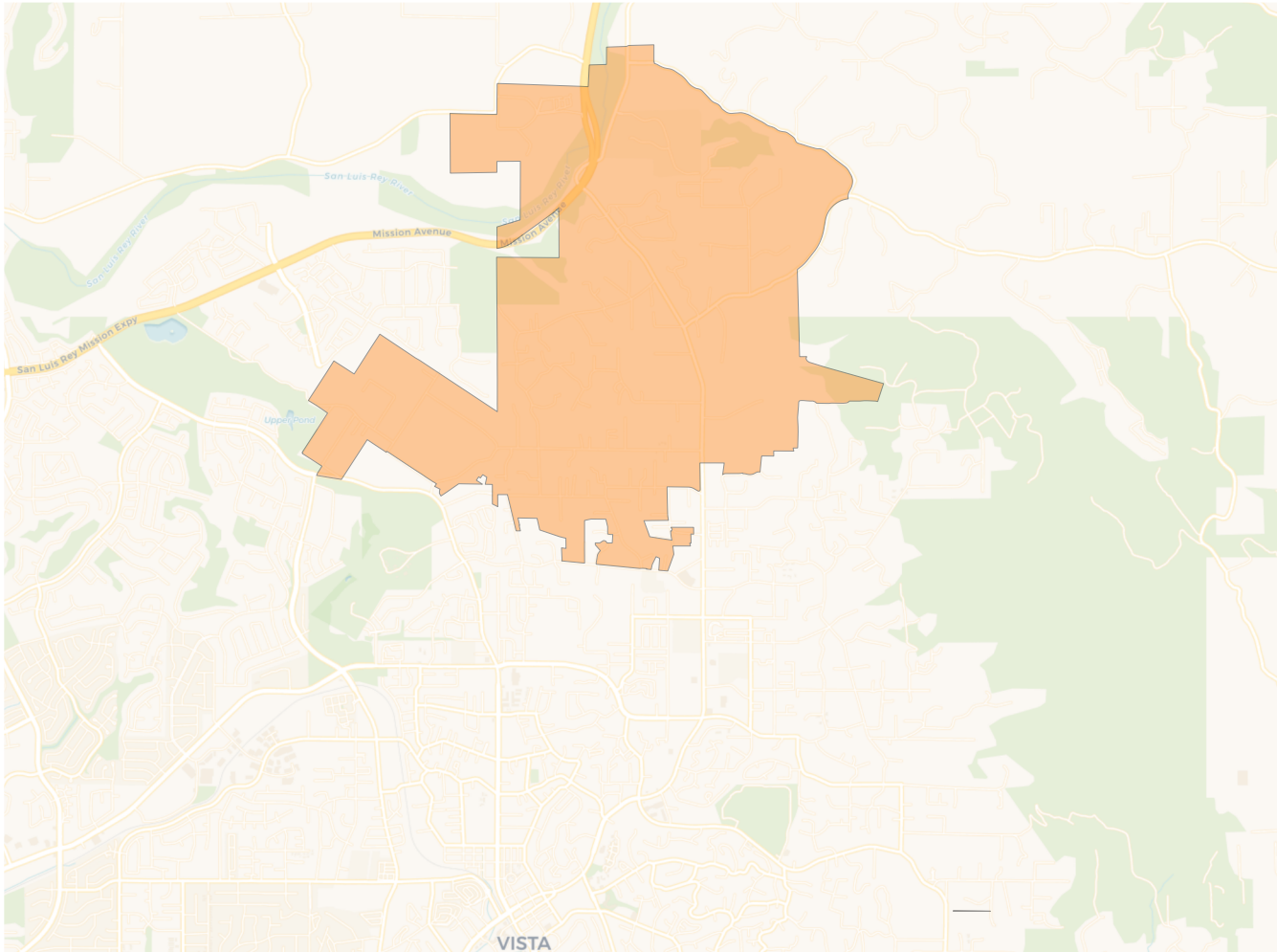
2010 Census

	A	B	C	D	E
Population	3,412	3,644	3,715	3,757	3,535
Deviation	-201	31	102	144	-78
Deviation %	-5.6%	0.9%	2.8%	4.0%	-2.2%
Other	2,206	2,907	2,297	1,969	1,824
Other %	64.6%	79.8%	61.8%	52.4%	51.6%
Latino	1,045	565	1,182	1,543	1,563
Latino %	30.6%	15.5%	31.8%	41.1%	44.2%
Asian	97	133	103	151	88
Asian %	2.8%	3.6%	2.8%	4.0%	2.5%
Black	64	39	133	93	60
Black %	1.9%	1.1%	3.6%	2.5%	1.7%

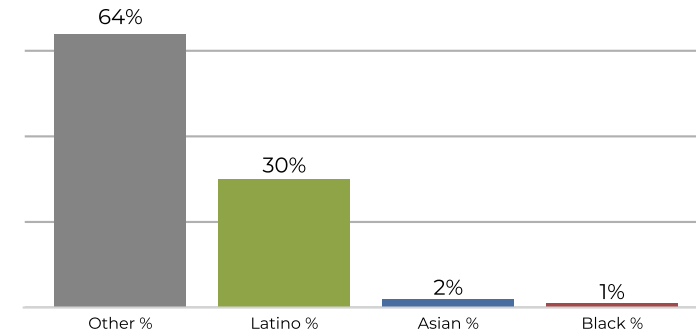
Citizen Voting Age Population (CVAP)

	A	B	C	D	E
Total CVAP	2,318	2,675	2,397	2,136	2,189
Other CVAP	1,784	2,267	1,825	1,312	1,568
Other CVAP %	77.0%	84.7%	76.1%	61.4%	71.6%
Latino CVAP	397	277	456	732	525
Latino CVAP %	17.1%	10.3%	19.0%	34.3%	24.0%
Asian CVAP	75	126	110	73	44
Asian CVAP %	3.2%	4.7%	4.6%	3.4%	2.0%
Black CVAP	62	6	6	19	52
Black CVAP %	2.7%	0.2%	0.2%	0.9%	2.4%

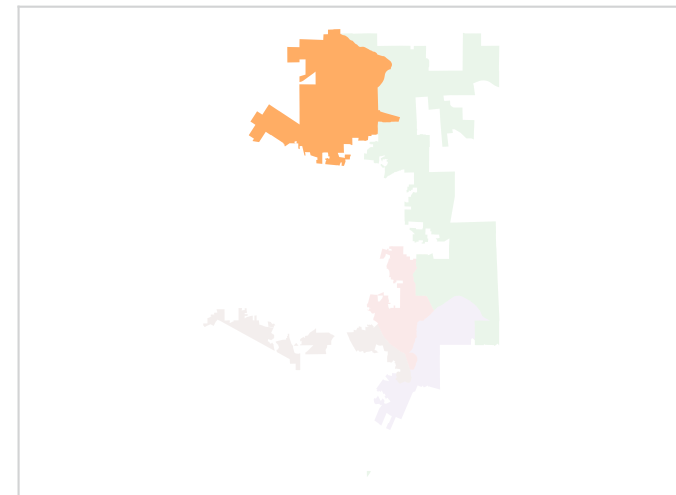
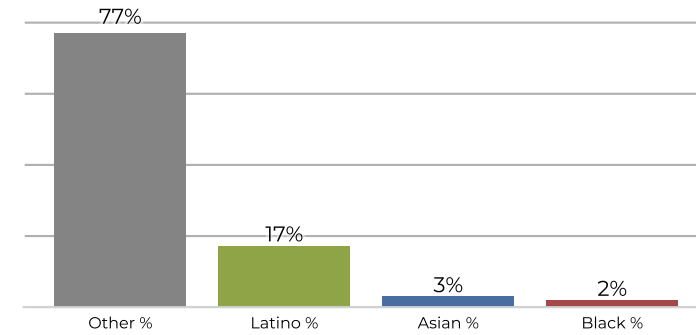
District A



2010 Census

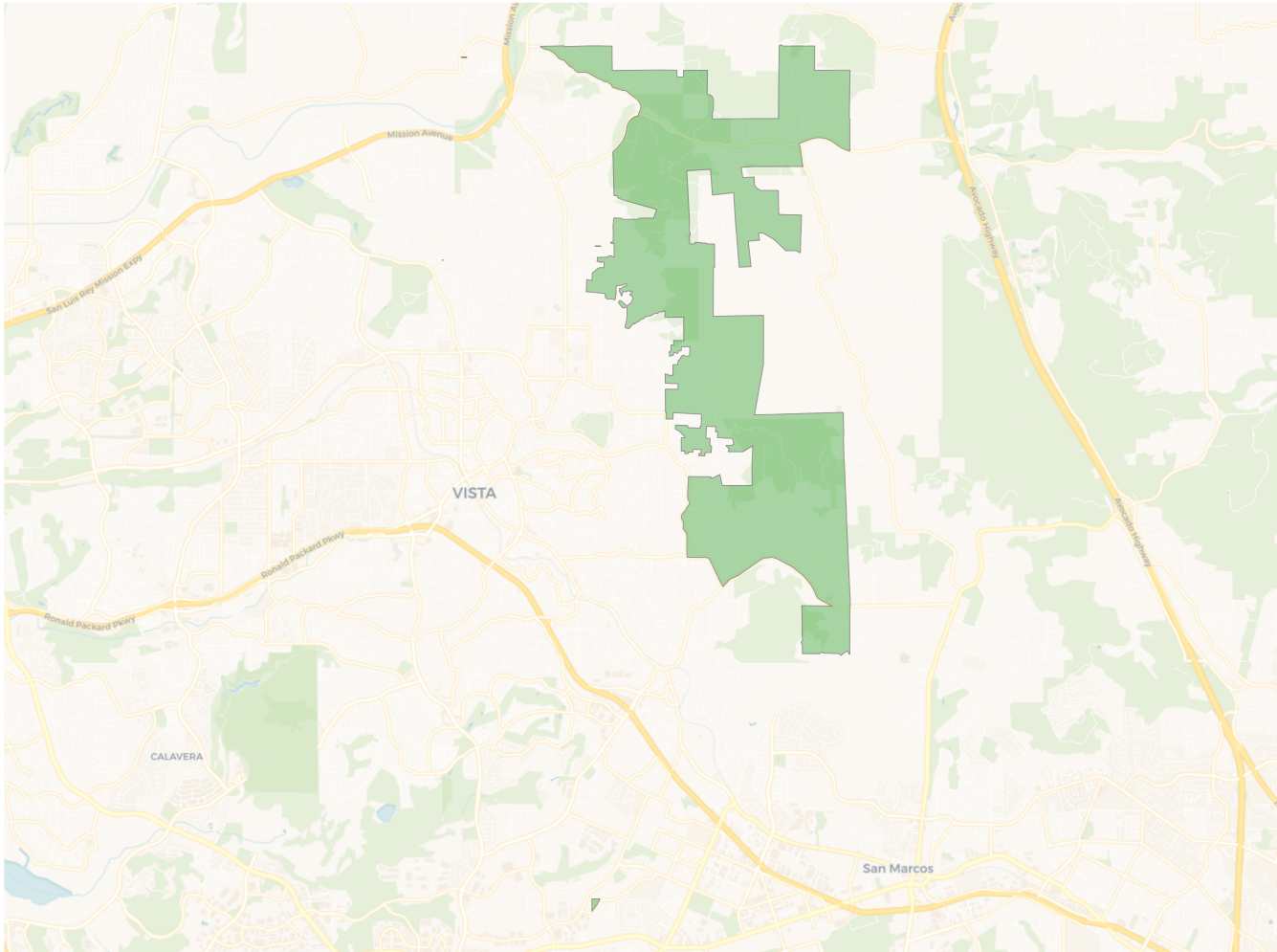


Citizen Voting Age Population

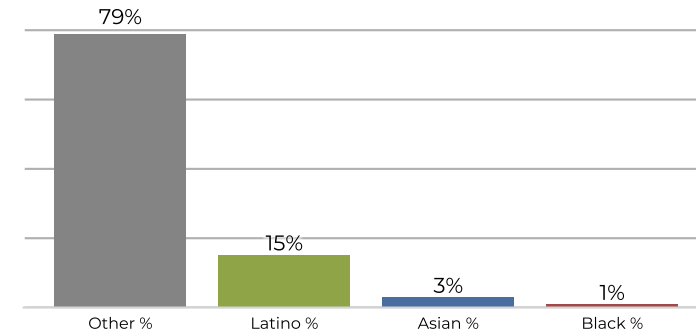


Population	Deviation	Deviation %	Other	Other %	Latino	Latino %	Asian	Asian %	Black	Black %
3,412	-201	-5.6%	2,206	64.6%	1,045	30.6%	97	2.8%	64	1.9%
Total CVAP	Other CVAP	Other CVAP %	Latino CVAP	Latino CVAP %	Asian CVAP	Asian CVAP %	Black CVAP	Black CVAP %		
2,318	1,784	77.0%	397	17.1%	75	3.2%	62	2.7%		

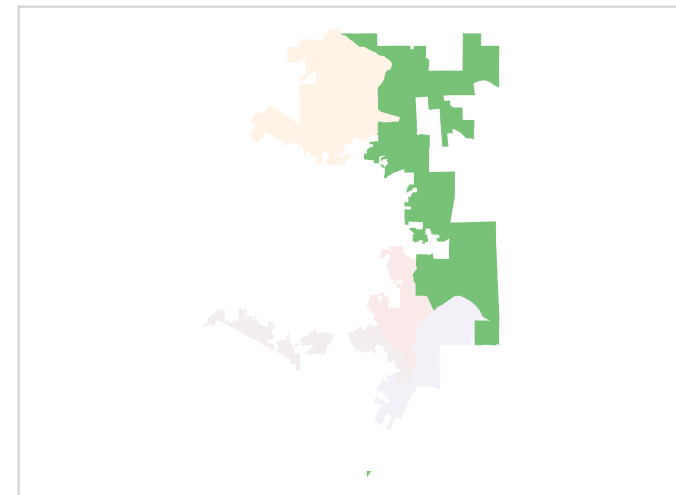
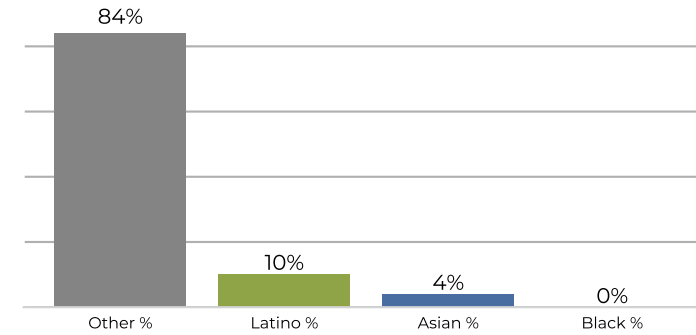
District B



2010 Census

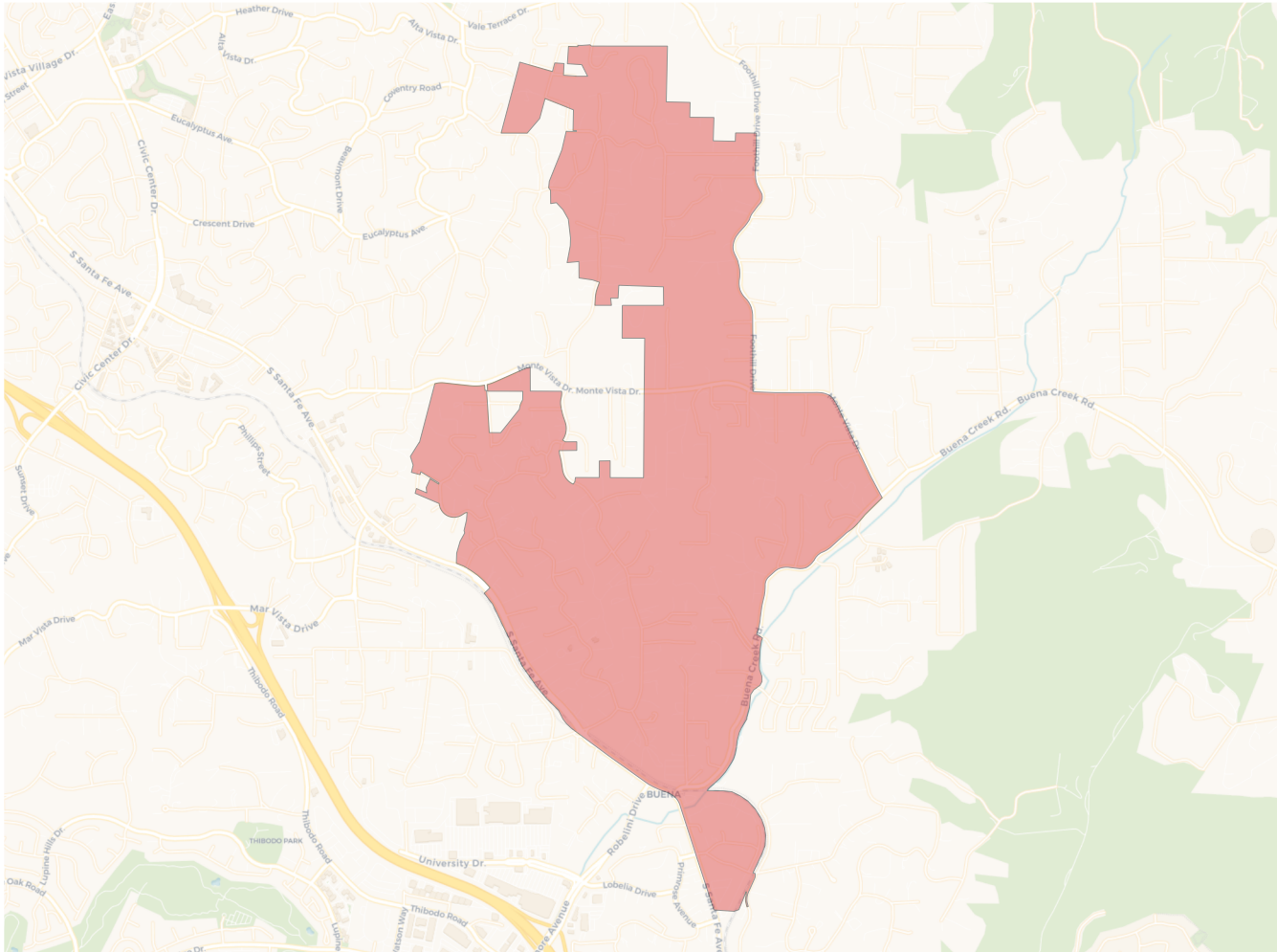


Citizen Voting Age Population

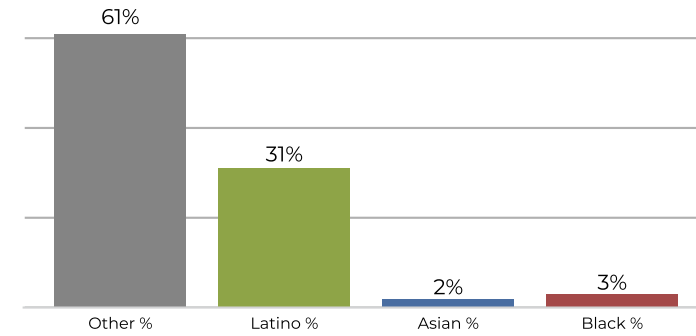


Population	Deviation	Deviation %	Other	Other %	Latino	Latino %	Asian	Asian %	Black	Black %
3,644	31	0.9%	2,907	79.8%	565	15.5%	133	3.6%	39	1.1%
Total CVAP	Other CVAP	Other CVAP %	Latino CVAP	Latino CVAP %	Asian CVAP	Asian CVAP %	Black CVAP	Black CVAP %		
2,675	2,267	84.7%	277	10.3%	126	4.7%	6	0.2%		

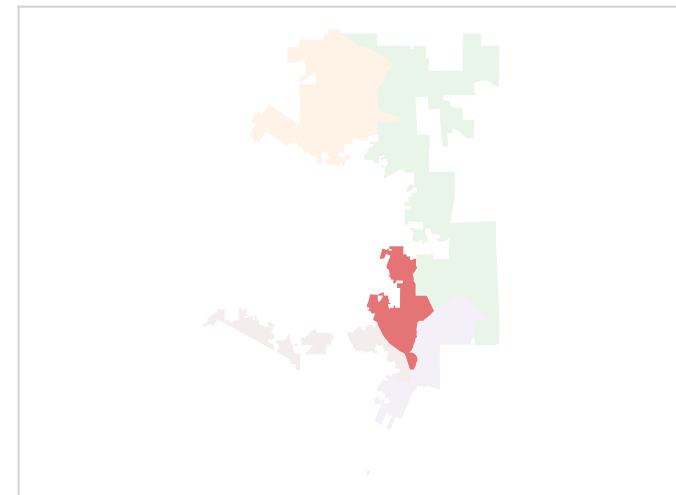
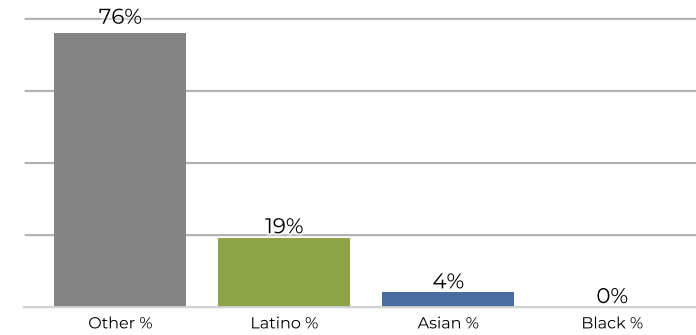
District C



2010 Census

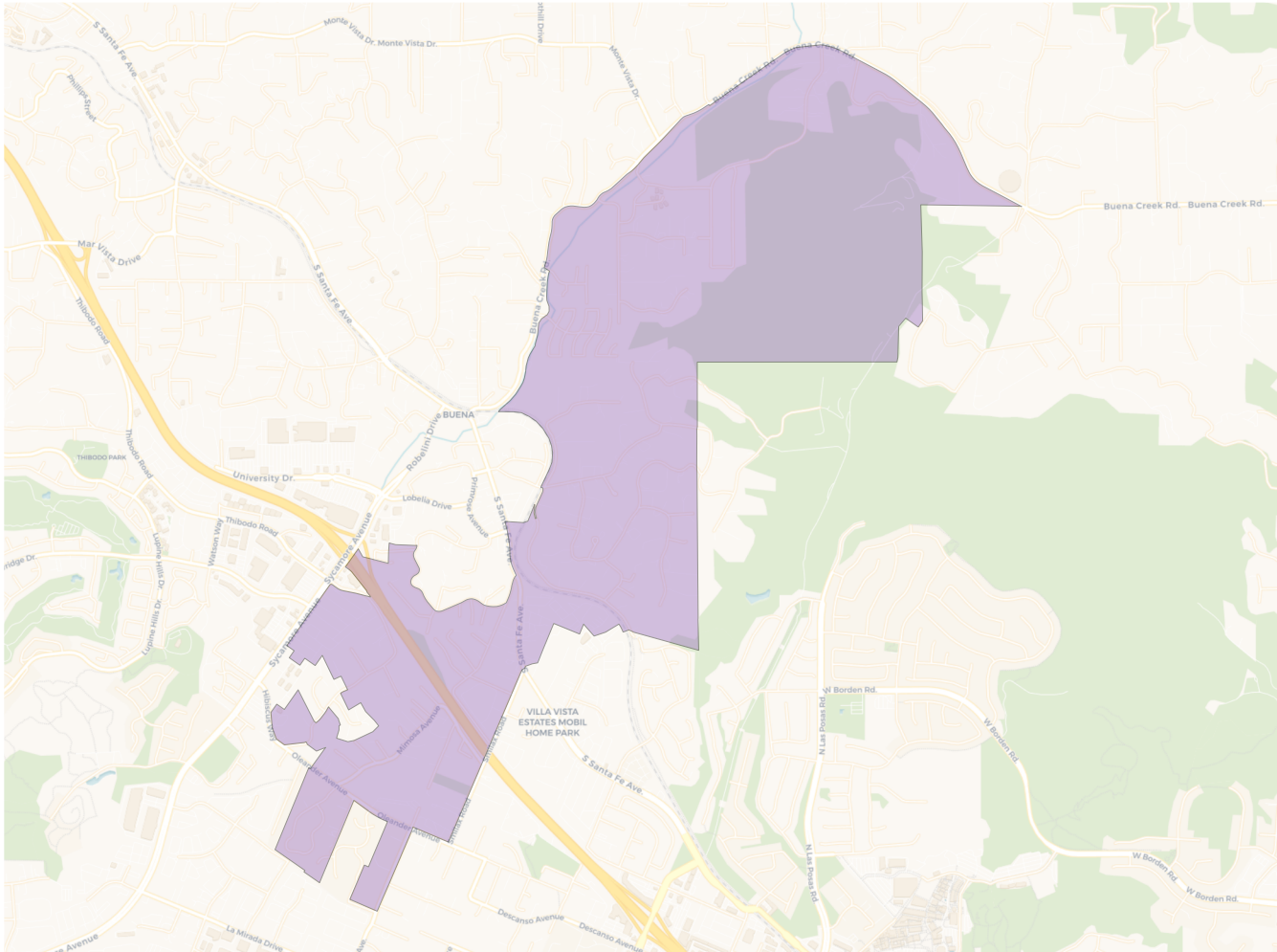


Citizen Voting Age Population

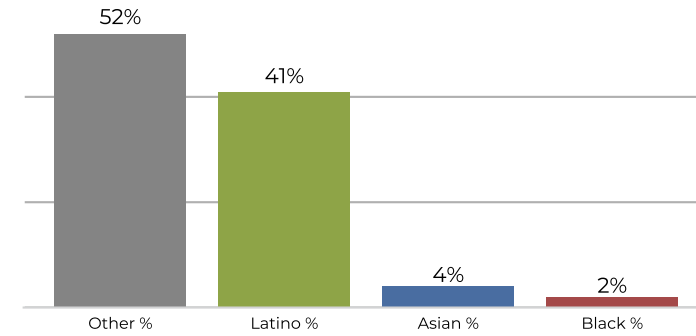


Population	Deviation	Deviation %	Other	Other %	Latino	Latino %	Asian	Asian %	Black	Black %
3,715	102	2.8%	2,297	61.8%	1,182	31.8%	103	2.8%	133	3.6%
Total CVAP	Other CVAP	Other CVAP %	Latino CVAP	Latino CVAP %	Asian CVAP	Asian CVAP %	Black CVAP	Black CVAP %		
2,397	1,825	76.1%	456	19.0%	110	4.6%	6	0.2%		

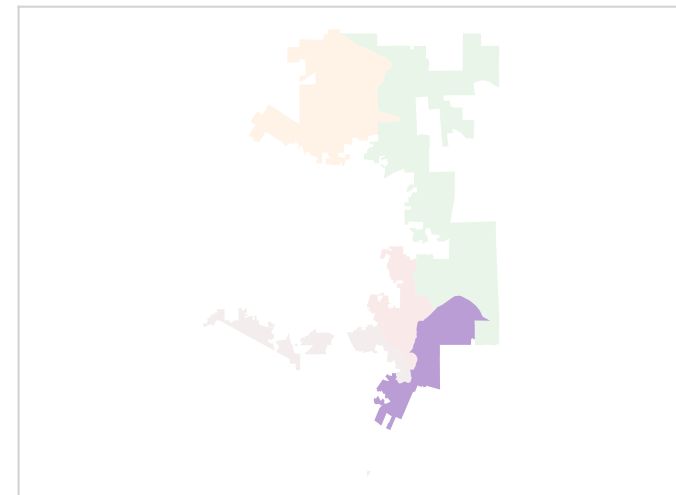
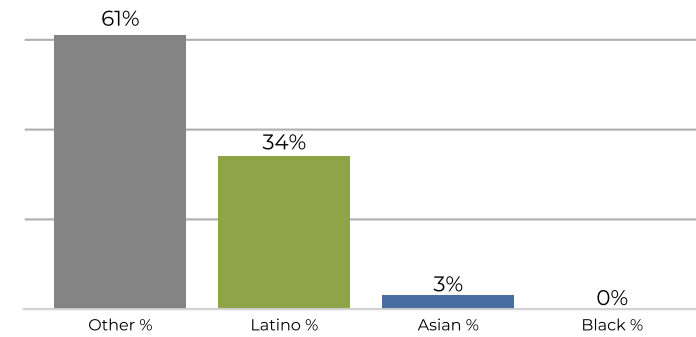
District D



2010 Census

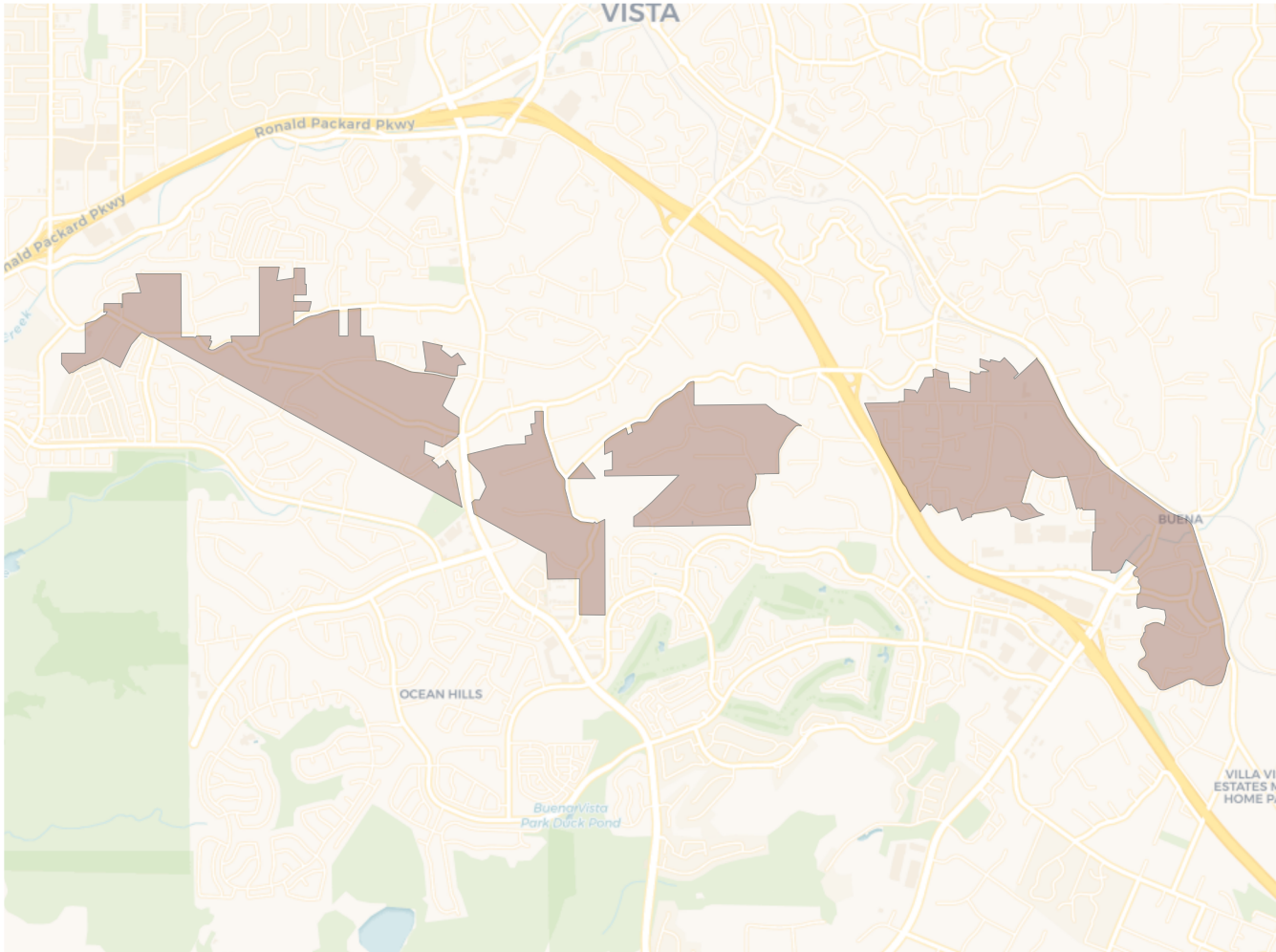


Citizen Voting Age Population

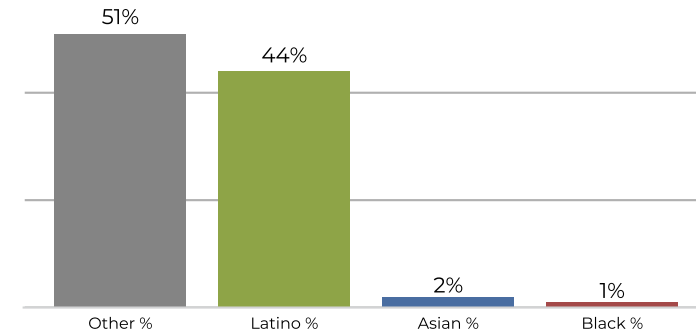


Population	Deviation	Deviation %	Other	Other %	Latino	Latino %	Asian	Asian %	Black	Black %
3,757	144	4.0%	1,969	52.4%	1,543	41.1%	151	4.0%	93	2.5%
Total CVAP	Other CVAP	Other CVAP %	Latino CVAP	Latino CVAP %	Asian CVAP	Asian CVAP %	Black CVAP	Black CVAP %		
2,136	1,312	61.4%	732	34.3%	73	3.4%	19	0.9%		

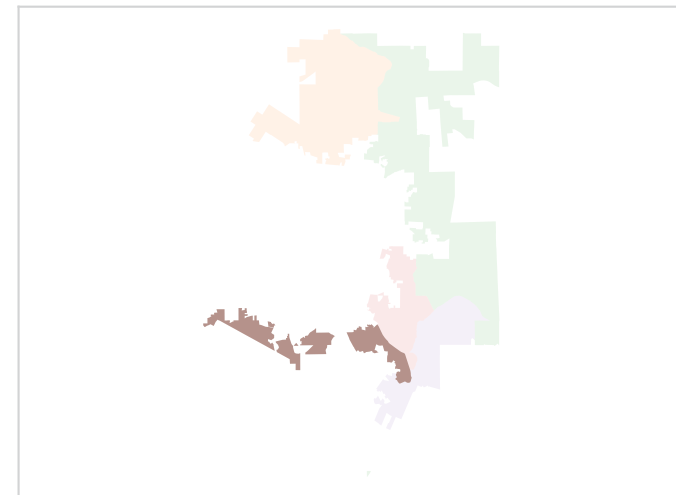
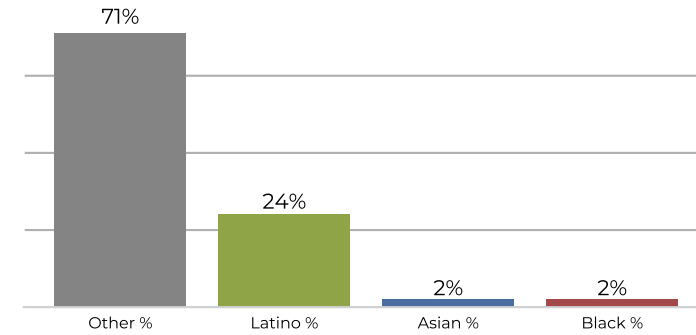
District E



2010 Census



Citizen Voting Age Population

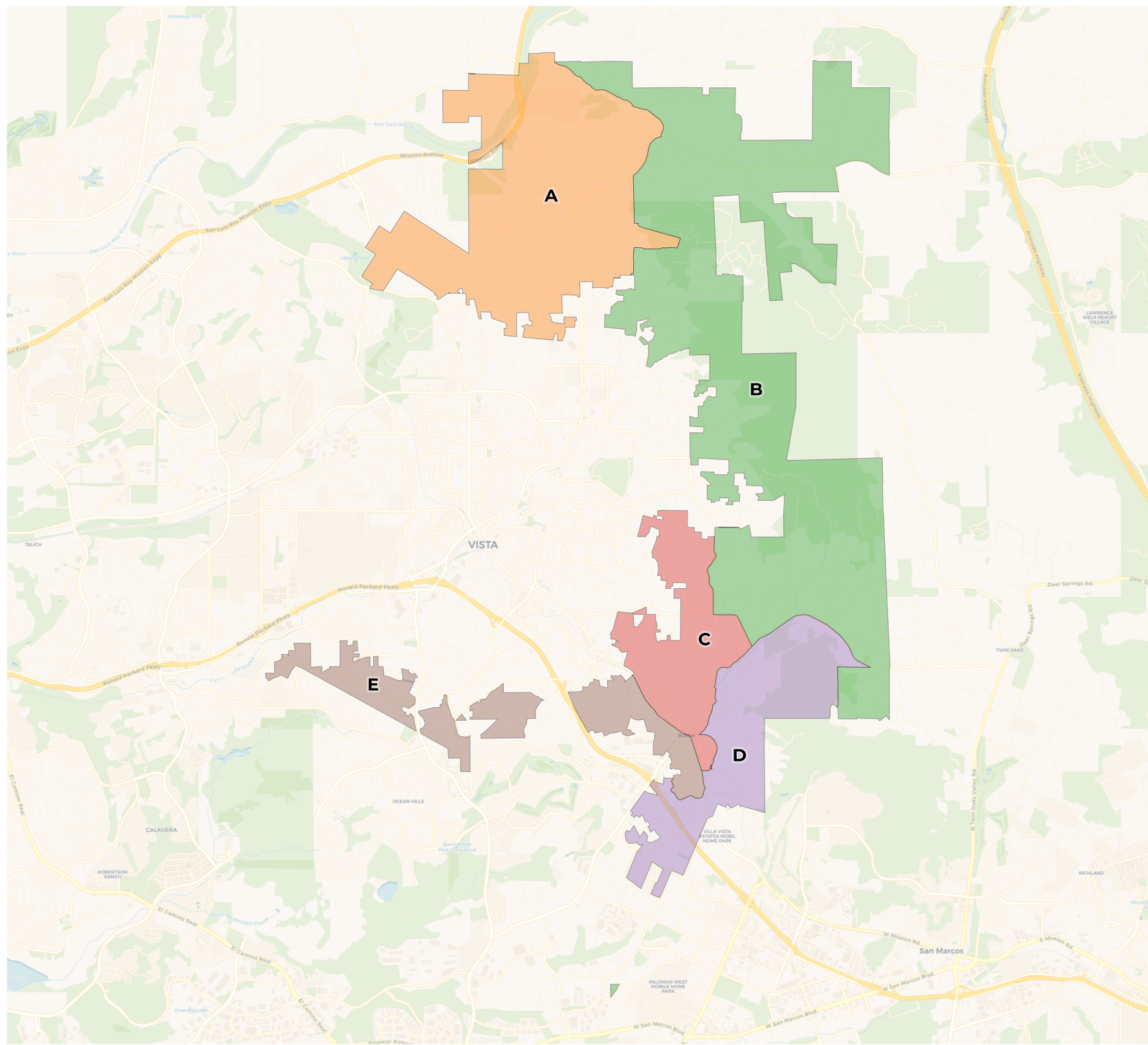


Population	Deviation	Deviation %	Other	Other %	Latino	Latino %	Asian	Asian %	Black	Black %
3,535	-78	-2.2%	1,824	51.6%	1,563	44.2%	88	2.5%	60	1.7%
Total CVAP	Other CVAP	Other CVAP %	Latino CVAP	Latino CVAP %	Asian CVAP	Asian CVAP %	Black CVAP	Black CVAP %		
2,189	1,568	71.6%	525	24.0%	44	2.0%	52	2.4%		

Vista Fire Protection District

Draft Map A

REDISTRICTING PARTNERS



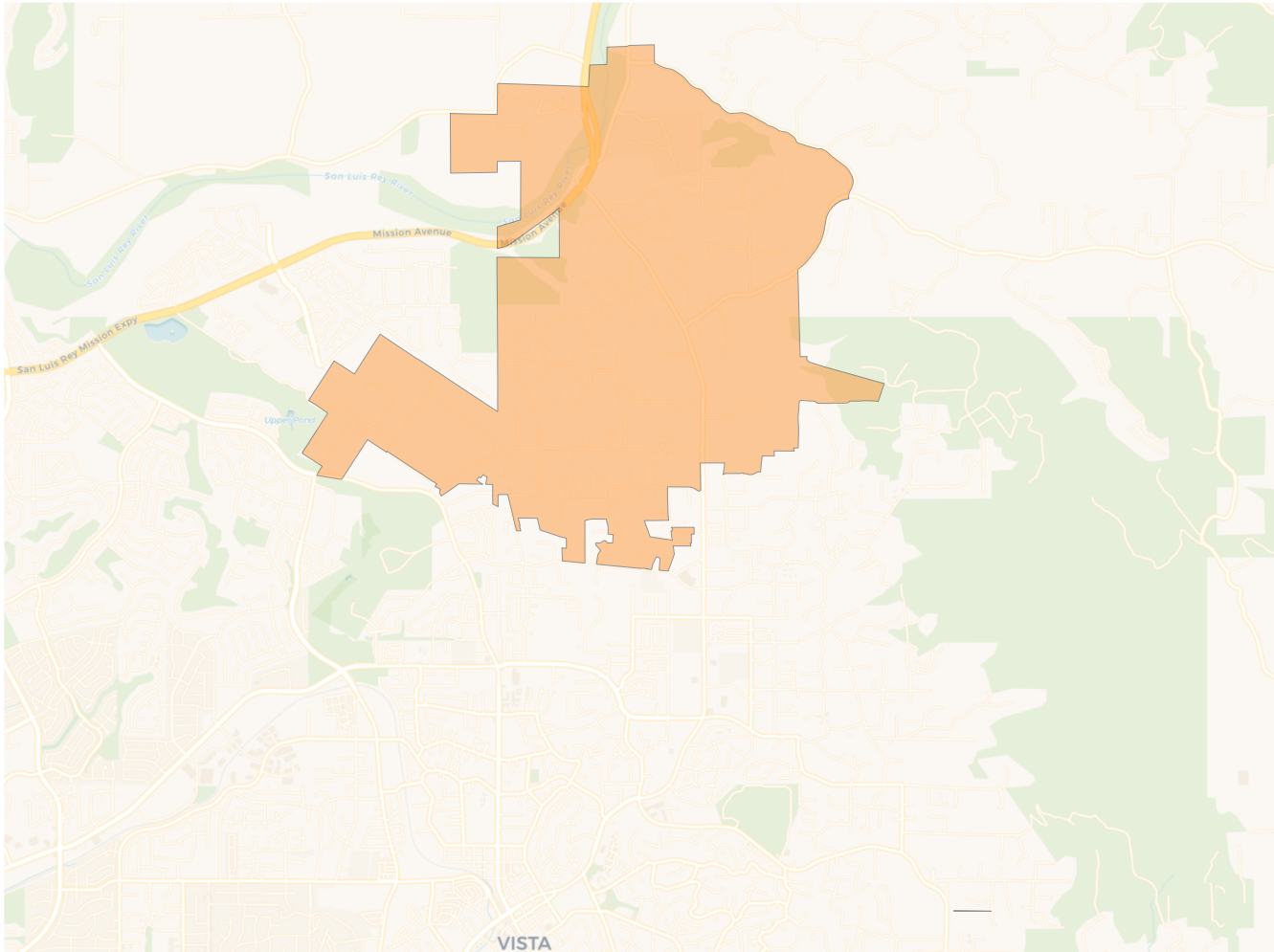
2020 Census

	A	B	C	D	E
Population	3,772	3,885	3,836	3,870	3,645
Deviation	-30	83	34	68	-157
Deviation %	-0.8%	2.2%	0.9%	1.8%	-4.1%
Other	2,363	2,979	2,085	2,112	1,832
Other %	62.6%	76.7%	54.4%	54.6%	50.3%
Latino	1,245	743	1,535	1,471	1,650
Latino %	33.0%	19.1%	40.0%	38.0%	45.3%
Asian	120	146	118	194	114
Asian %	3.2%	3.8%	3.1%	5.0%	3.1%
Black	44	17	98	93	49
Black %	1.2%	0.4%	2.6%	2.4%	1.3%

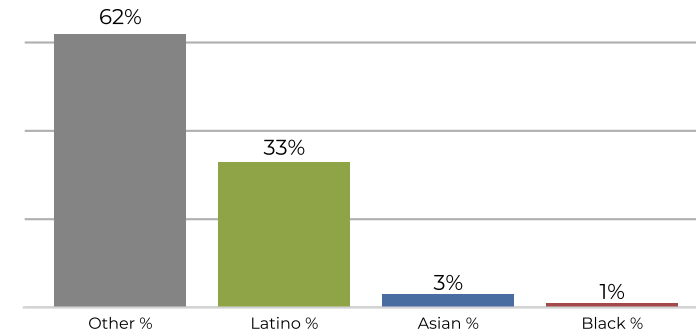
Citizen Voting Age Population (CVAP)

	A	B	C	D	E
Total CVAP	2,993	3,155	2,973	2,732	2,551
Other CVAP	2,085	2,568	2,061	1,824	1,567
Other CVAP %	69.7%	81.4%	69.3%	66.8%	61.4%
Latino CVAP	745	408	826	675	886
Latino CVAP %	24.9%	12.9%	27.8%	24.7%	34.7%
Asian CVAP	59	127	27	117	64
Asian CVAP %	2.0%	4.0%	0.9%	4.3%	2.5%
Black CVAP	104	52	59	116	34
Black CVAP %	3.5%	1.6%	2.0%	4.2%	1.3%

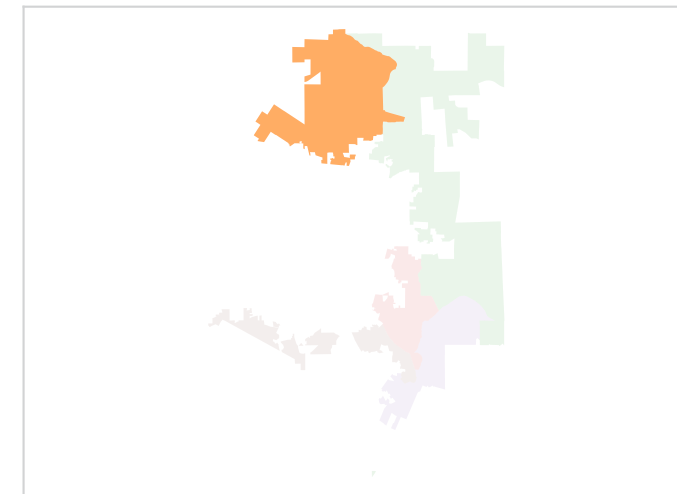
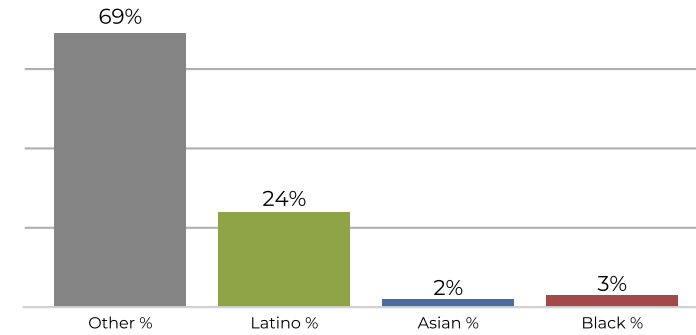
District A



2020 Census

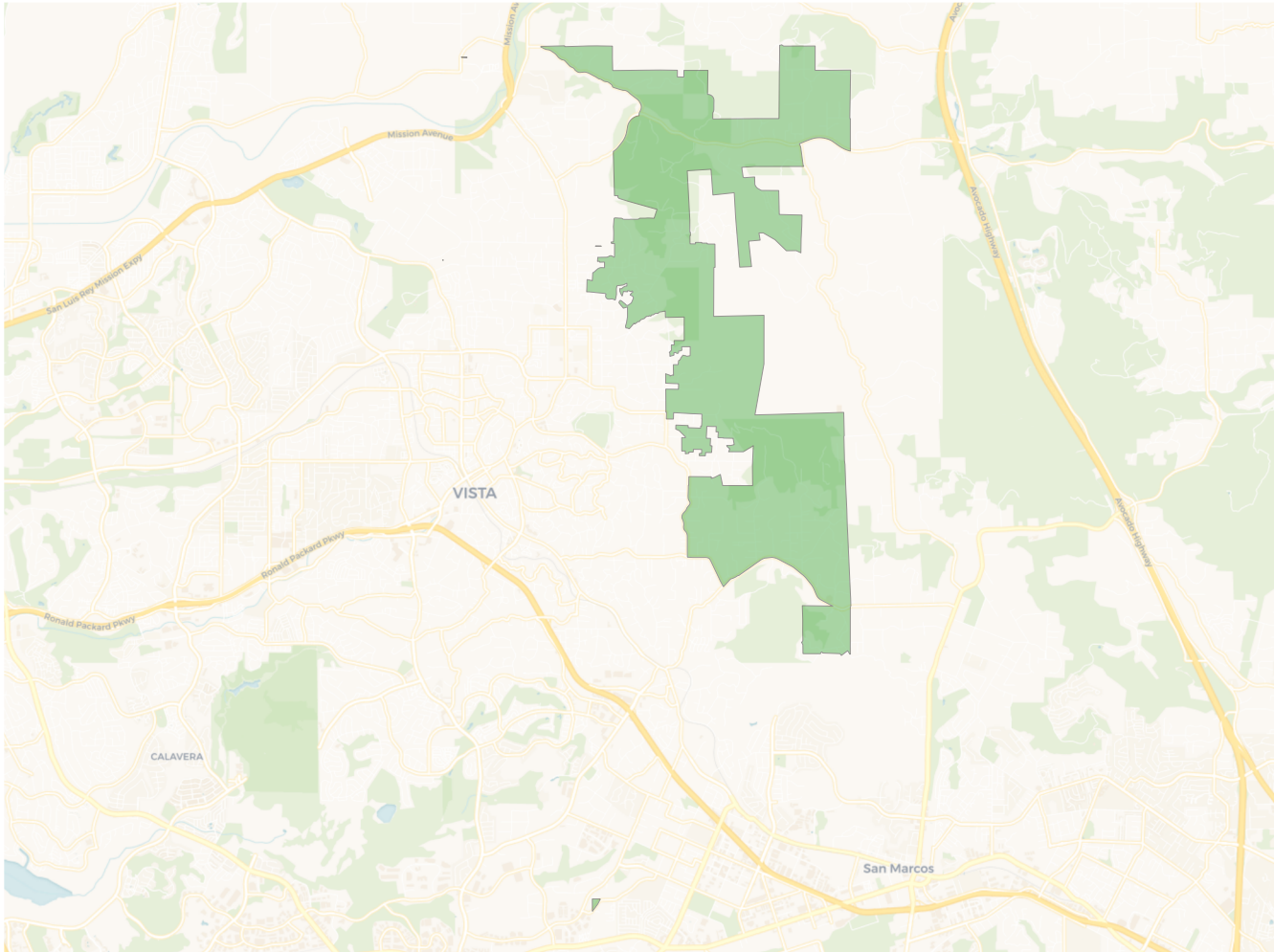


Citizen Voting Age Population

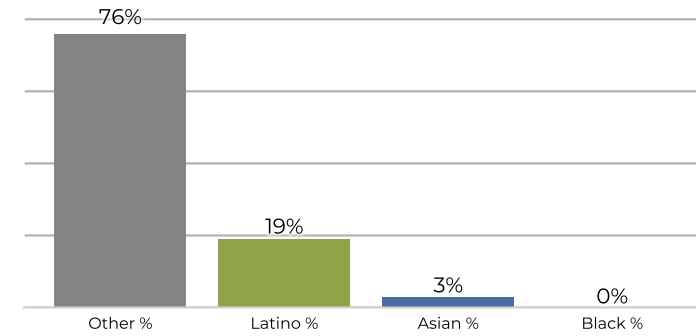


Population	Deviation	Deviation %	Other	Other %	Latino	Latino %	Asian	Asian %	Black	Black %
3,772	-30	-0.8%	2,363	62.6%	1,245	33.0%	120	3.2%	44	1.2%
Total CVAP	Other CVAP	Other CVAP %	Latino CVAP	Latino CVAP %	Asian CVAP	Asian CVAP %	Black CVAP	Black CVAP %		
2,993	2,085	69.7%	745	24.9%	59	2.0%	104	3.5%		

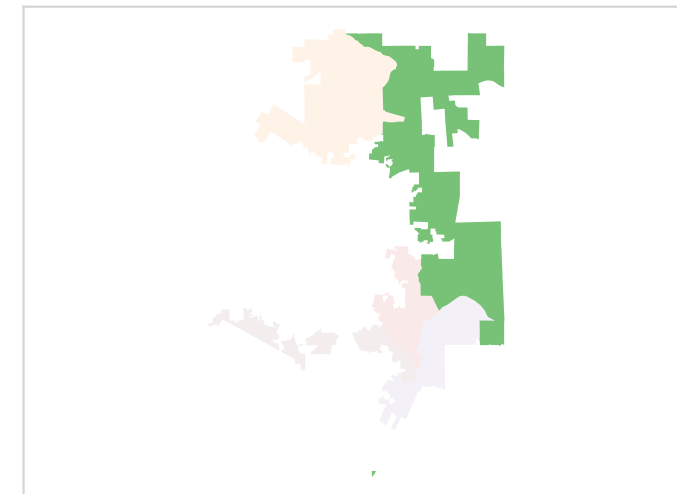
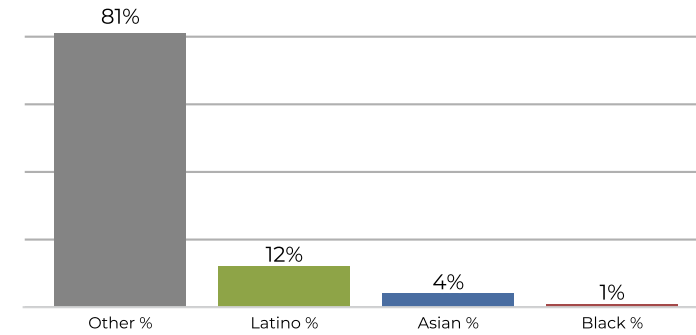
District B



2020 Census

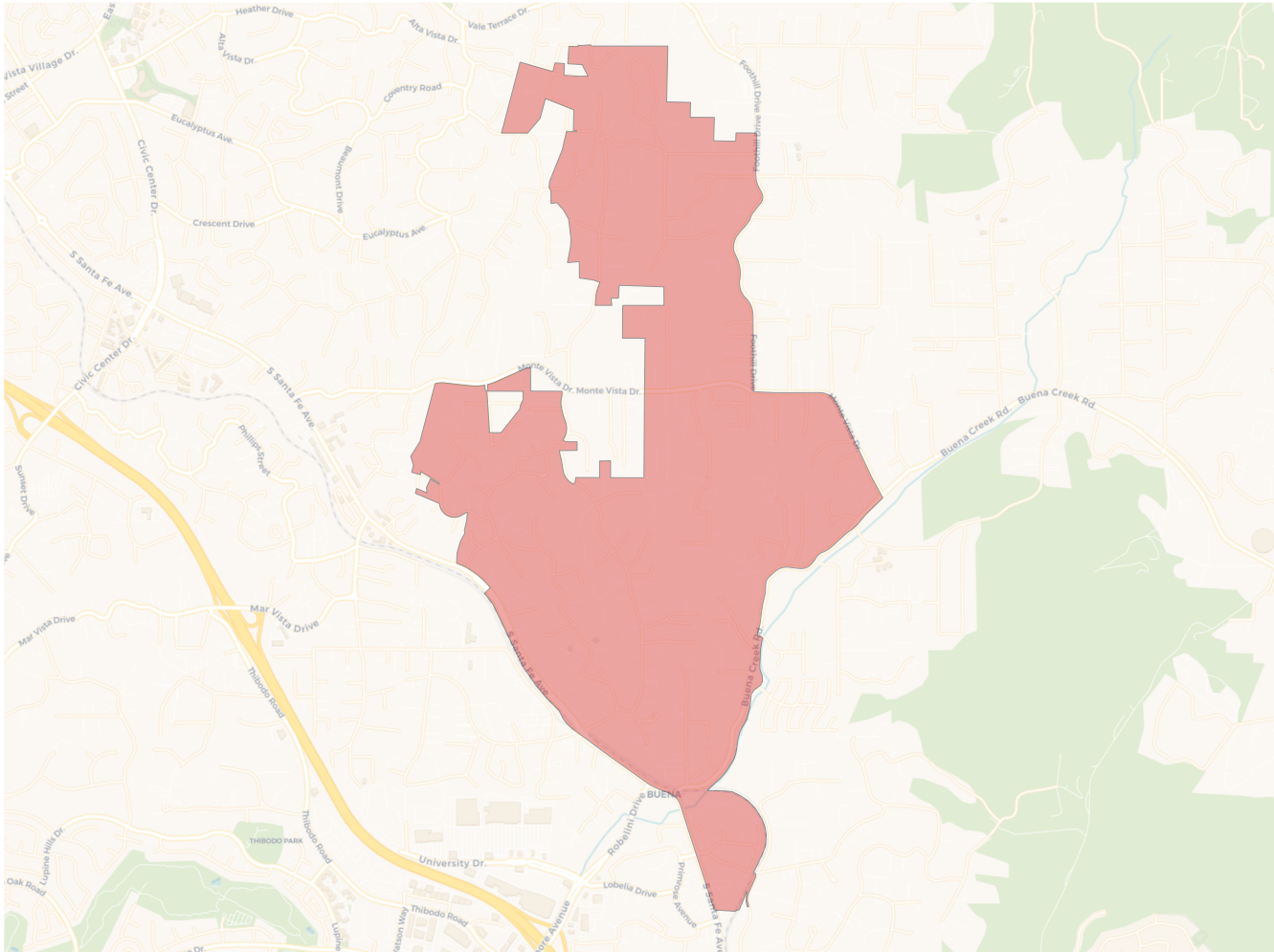


Citizen Voting Age Population

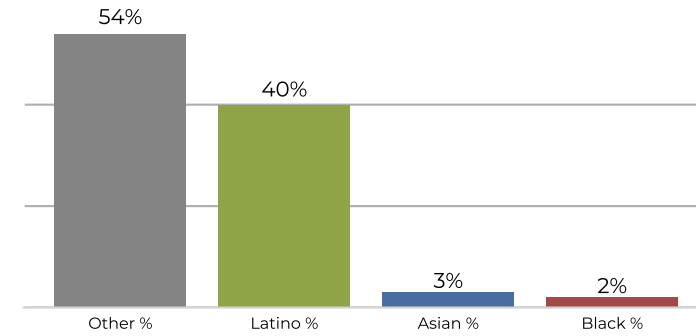


Population	Deviation	Deviation %	Other	Other %	Latino	Latino %	Asian	Asian %	Black	Black %
3,885	83	2.2%	2,979	76.7%	743	19.1%	146	3.8%	17	0.4%
Total CVAP	Other CVAP	Other CVAP %	Latino CVAP	Latino CVAP %	Asian CVAP	Asian CVAP %	Black CVAP	Black CVAP %		
3,155	2,568	81.4%	408	12.9%	127	4.0%	52	1.6%		

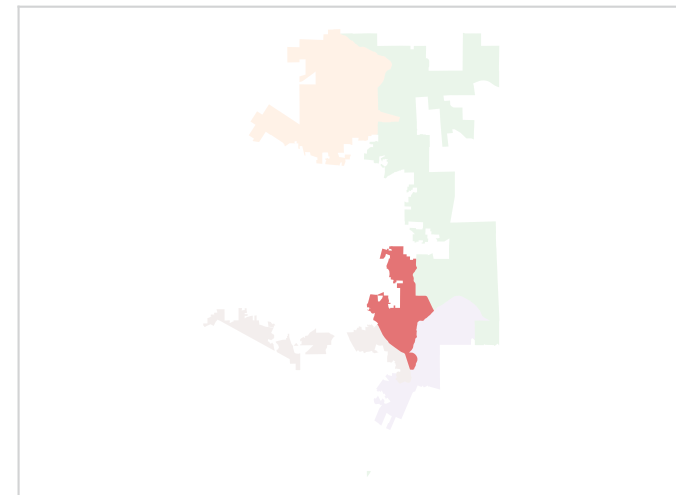
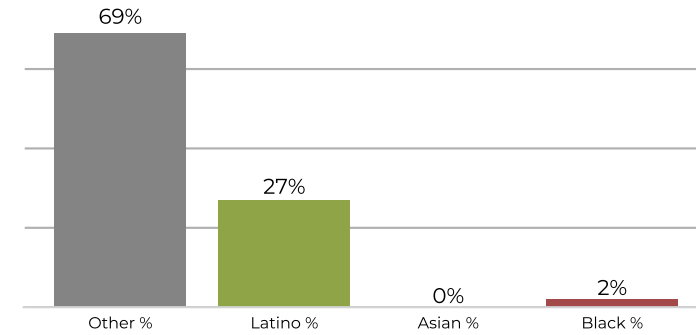
District C



2020 Census

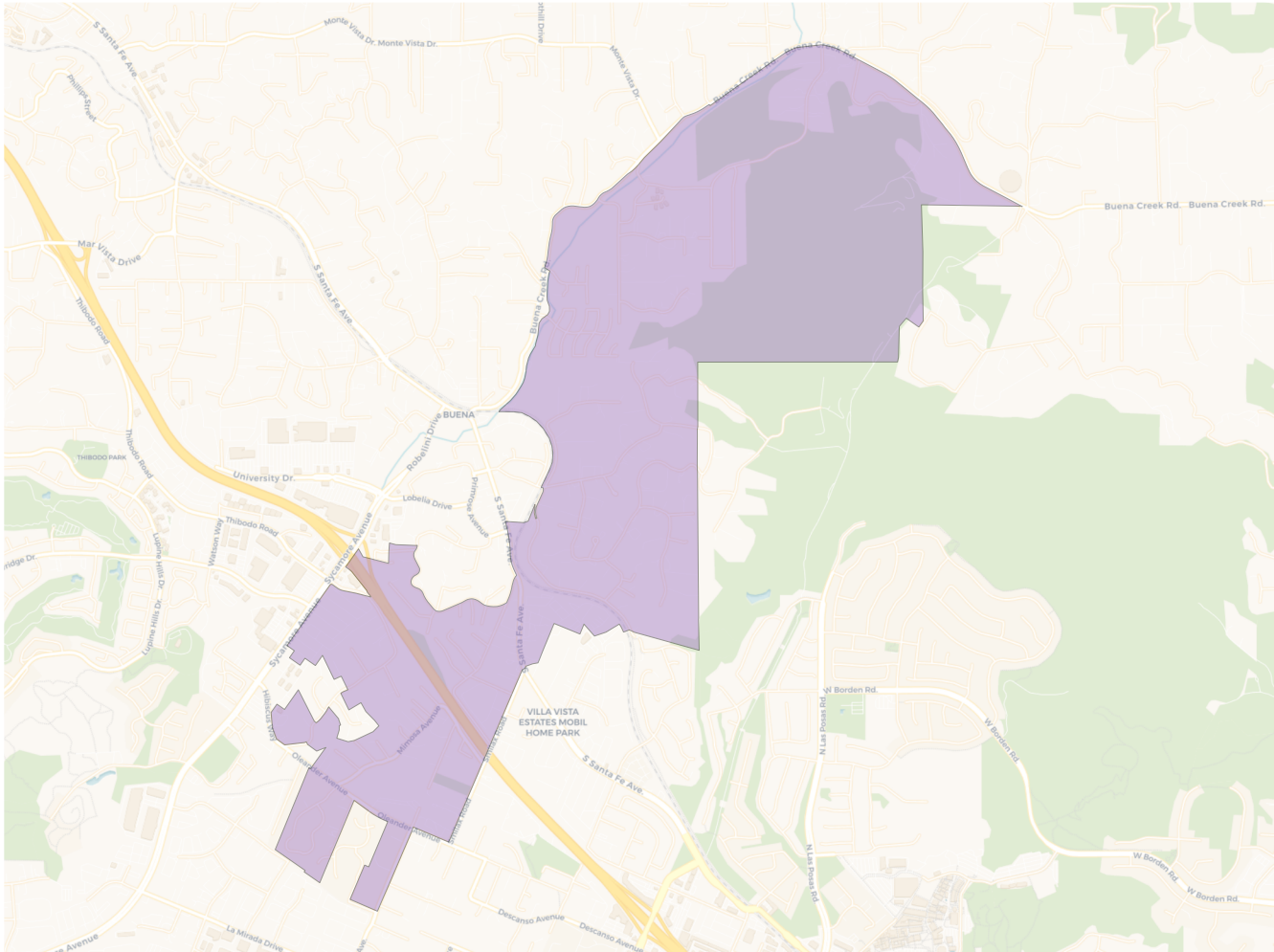


Citizen Voting Age Population

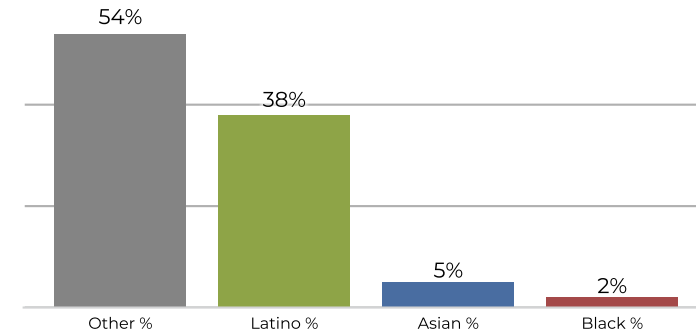


Population	Deviation	Deviation %	Other	Other %	Latino	Latino %	Asian	Asian %	Black	Black %
3,836	34	0.9%	2,085	54.4%	1,535	40.0%	118	3.1%	98	2.6%
Total CVAP	Other CVAP	Other CVAP %	Latino CVAP	Latino CVAP %	Asian CVAP	Asian CVAP %	Black CVAP	Black CVAP %		
2,973	2,061	69.3%	826	27.8%	27	0.9%	59	2.0%		

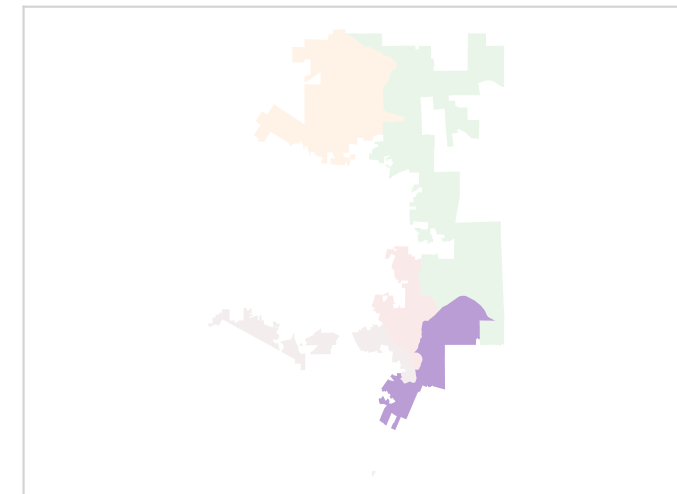
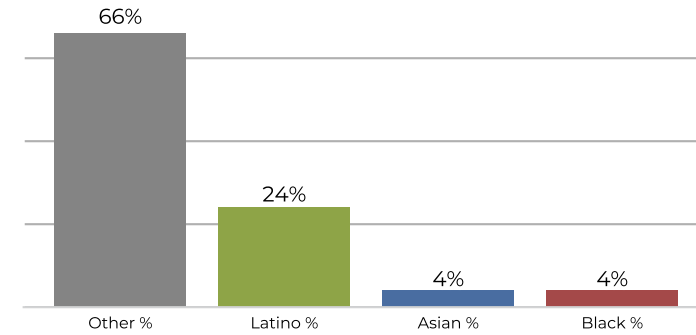
District D



2020 Census

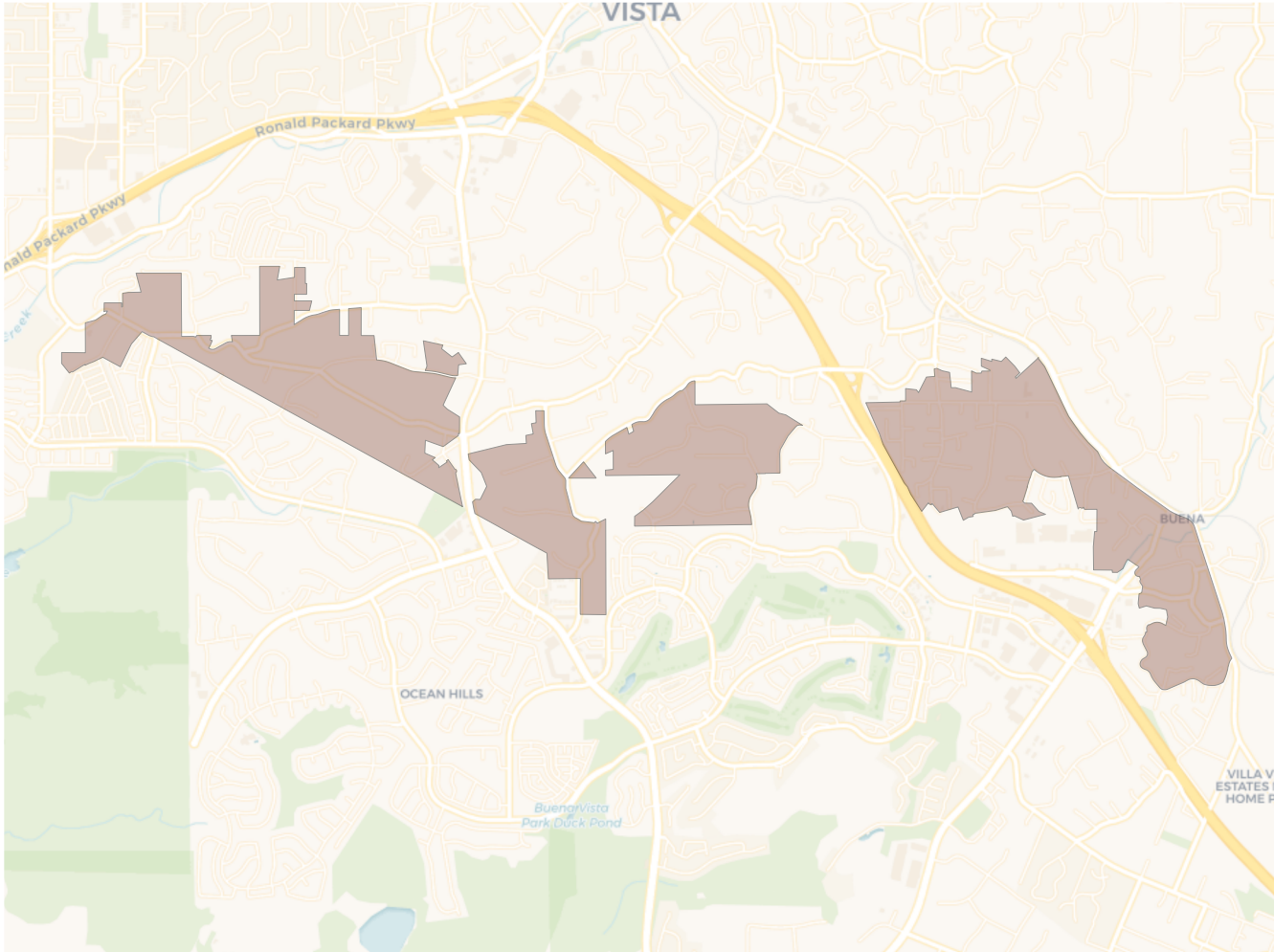


Citizen Voting Age Population

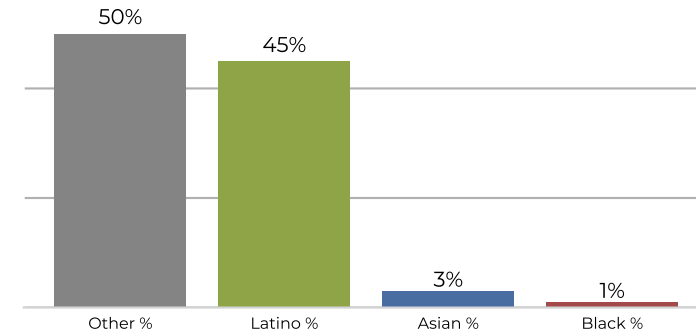


Population	Deviation	Deviation %	Other	Other %	Latino	Latino %	Asian	Asian %	Black	Black %
3,870	68	1.8%	2,112	54.6%	1,471	38.0%	194	5.0%	93	2.4%
Total CVAP	Other CVAP	Other CVAP %	Latino CVAP	Latino CVAP %	Asian CVAP	Asian CVAP %	Black CVAP	Black CVAP %		
2,732	1,824	66.8%	675	24.7%	117	4.3%	116	4.2%		

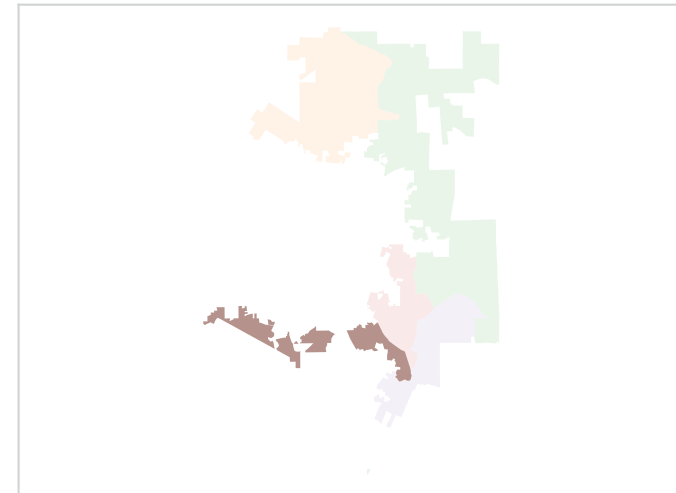
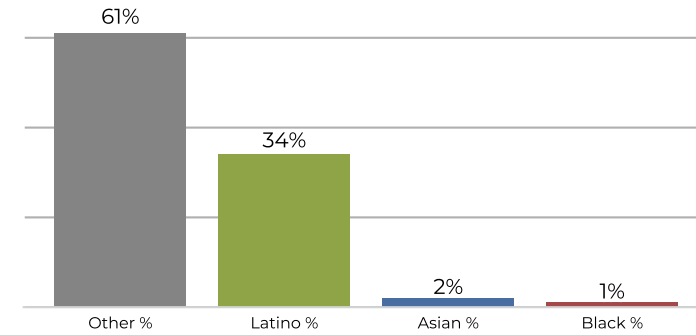
District E



2020 Census



Citizen Voting Age Population



Population	Deviation	Deviation %	Other	Other %	Latino	Latino %	Asian	Asian %	Black	Black %
3,645	-157	-4.1%	1,832	50.3%	1,650	45.3%	114	3.1%	49	1.3%
Total CVAP	Other CVAP	Other CVAP %	Latino CVAP	Latino CVAP %	Asian CVAP	Asian CVAP %	Black CVAP	Black CVAP %		
2,551	1,567	61.4%	886	34.7%	64	2.5%	34	1.3%		