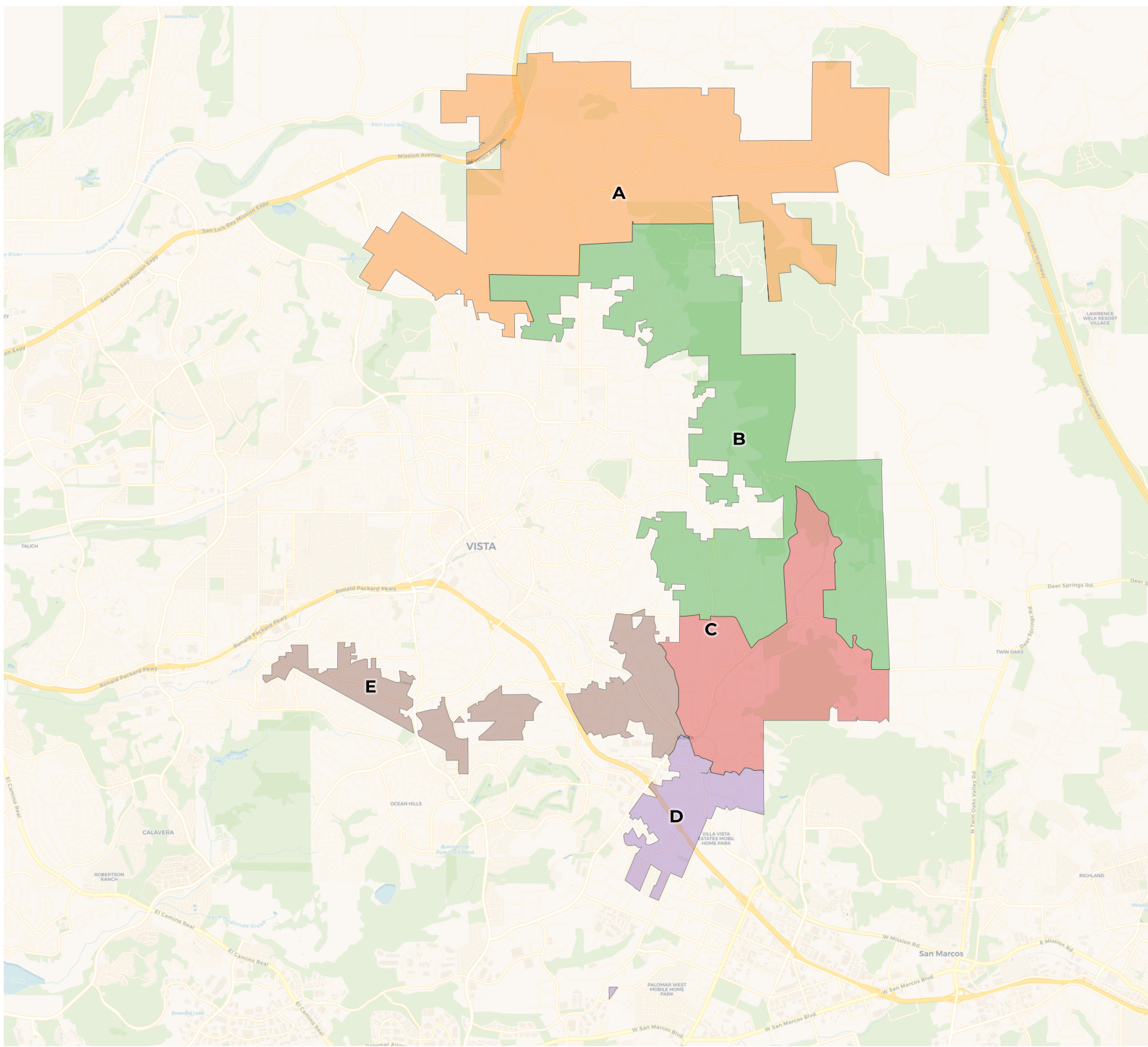


Vista Fire Protection District

Draft Map B (JP-1)

 **REDISTRICTING
PARTNERS**



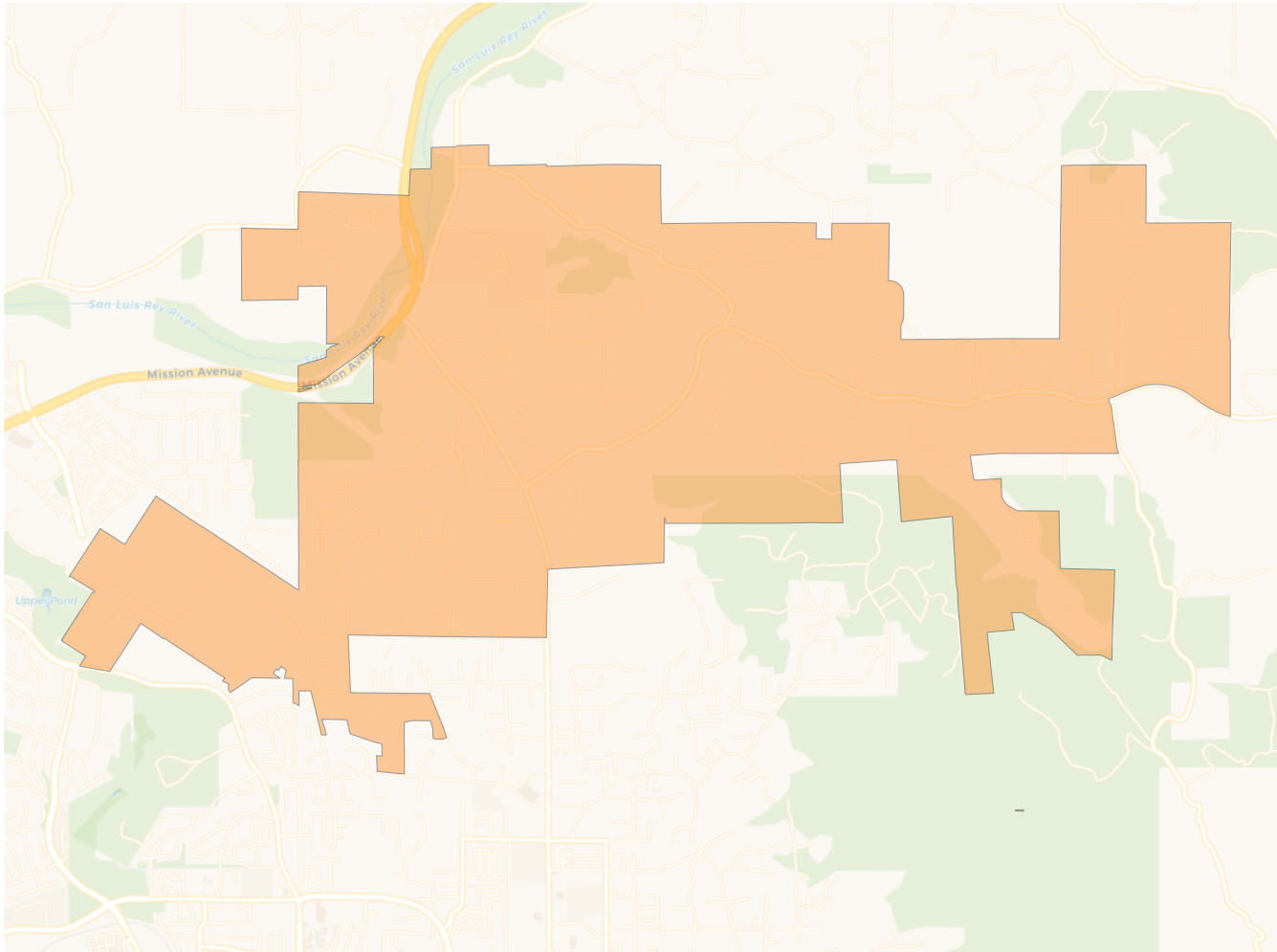
2020 Census

	A	B	C	D	E
Population	3,804	3,833	3,765	3,745	3,861
Deviation	2	31	-37	-57	59
Deviation %	0.1%	0.8%	-1.0%	-1.5%	1.6%
Other	2,534	2,745	2,274	1,532	2,286
Other %	66.6%	71.6%	60.4%	40.9%	59.2%
Latino	1,093	922	1,274	1,949	1,406
Latino %	28.7%	24.1%	33.8%	52.0%	36.4%
Asian	139	127	135	171	120
Asian %	3.7%	3.3%	3.6%	4.6%	3.1%
Black	38	39	82	93	49
Black %	1.0%	1.0%	2.2%	2.5%	1.3%

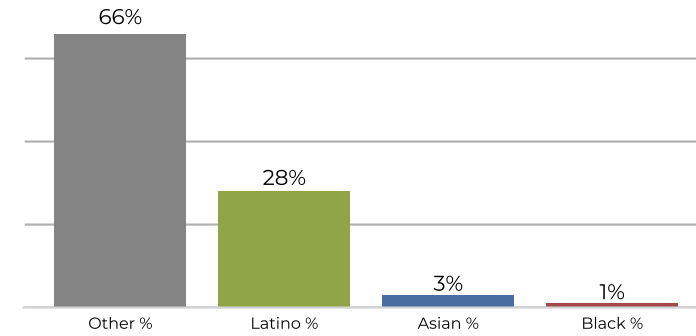
Citizen Voting Age Population (CVAP)

	A	B	C	D	E
Total CVAP	3,185	2,957	2,816	2,486	2,960
Other CVAP	2,292	2,332	2,018	1,336	2,127
Other CVAP %	72.0%	78.9%	71.7%	53.7%	71.9%
Latino CVAP	724	444	696	888	788
Latino CVAP %	22.7%	15.0%	24.7%	35.7%	26.6%
Asian CVAP	88	102	36	142	26
Asian CVAP %	2.8%	3.4%	1.3%	5.7%	0.9%
Black CVAP	81	79	66	120	19
Black CVAP %	2.5%	2.7%	2.3%	4.8%	0.6%

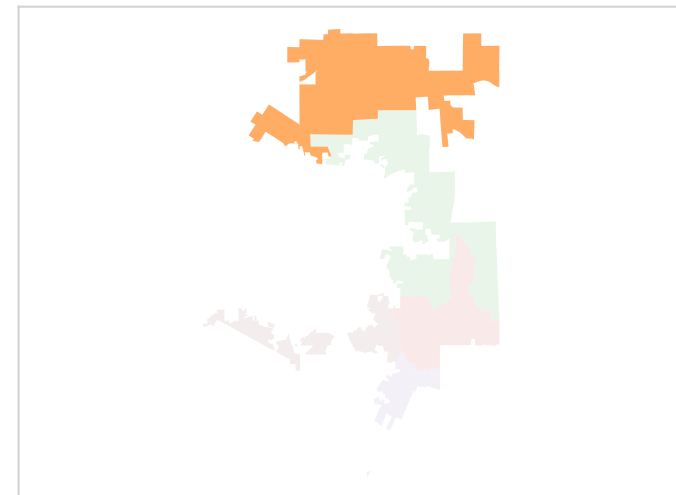
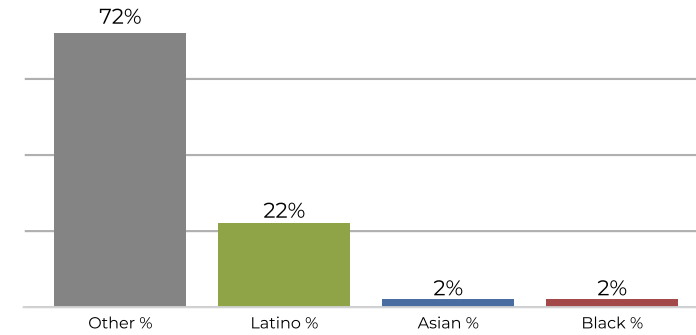
District A



2020 Census

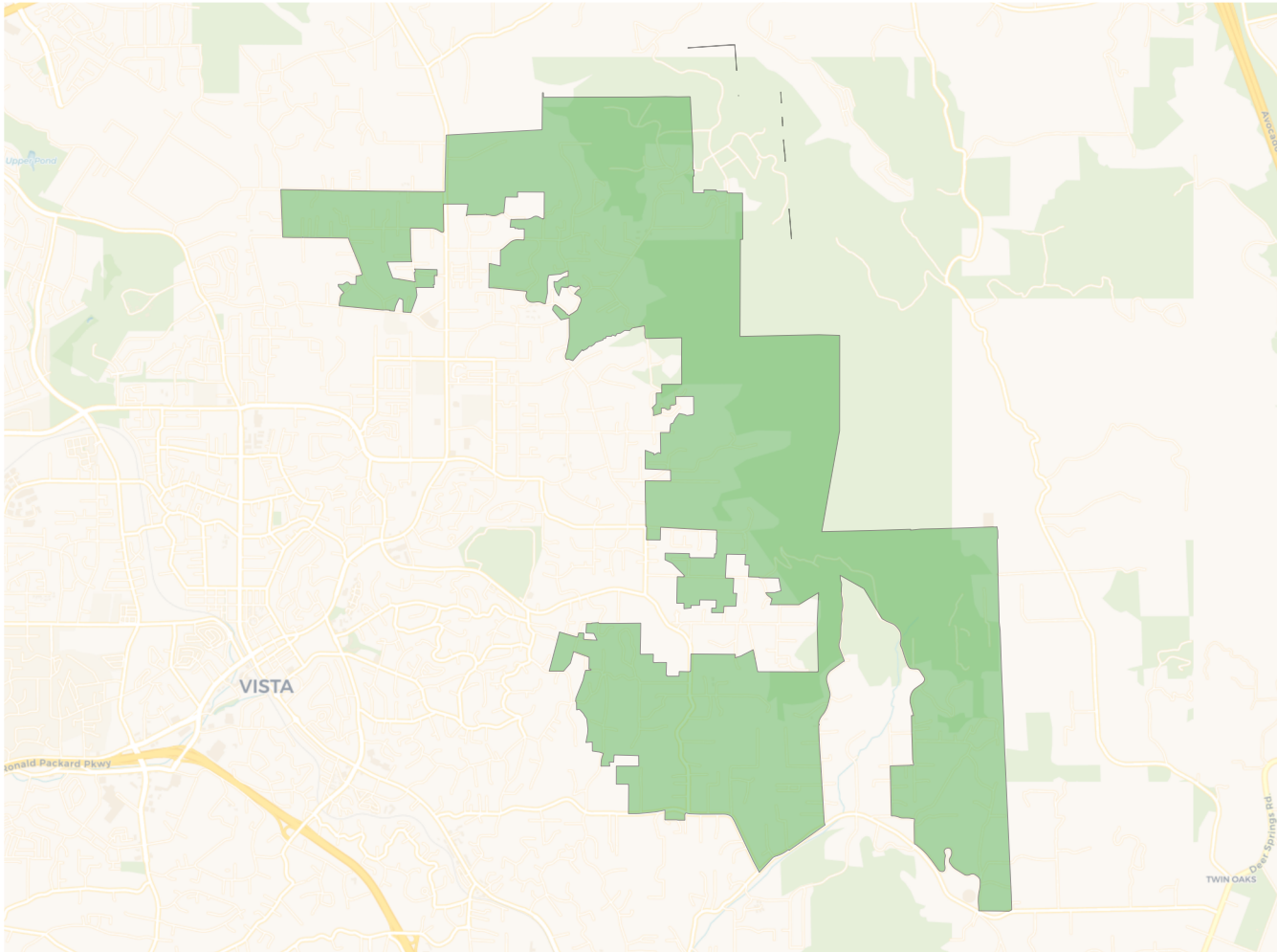


Citizen Voting Age Population

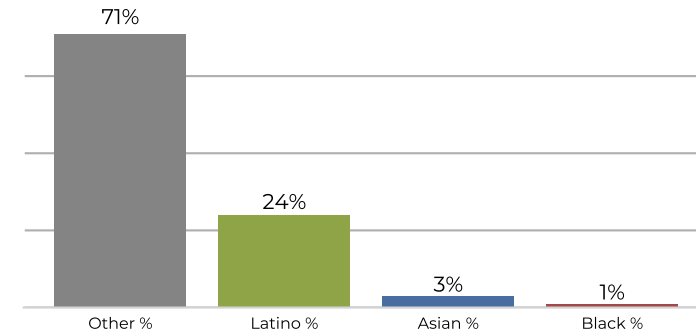


Population	Deviation	Deviation %	Other	Other %	Latino	Latino %	Asian	Asian %	Black	Black %
3,804	2	0.1%	2,534	66.6%	1,093	28.7%	139	3.7%	38	1.0%
Total CVAP	Other CVAP	Other CVAP %	Latino CVAP	Latino CVAP %	Asian CVAP	Asian CVAP %	Black CVAP	Black CVAP %		
3,185	2,292	72.0%	724	22.7%	88	2.8%	81	2.5%		

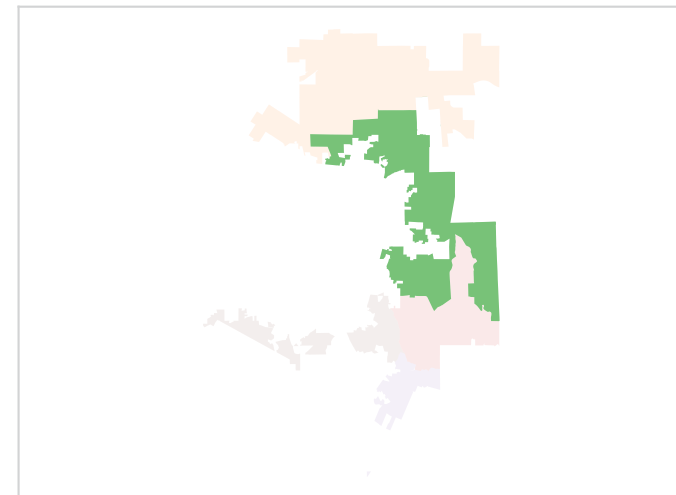
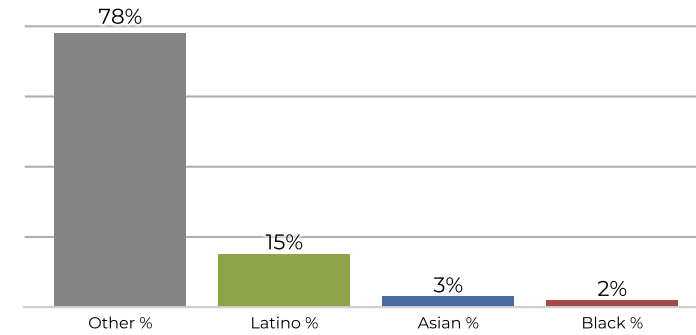
District B



2020 Census

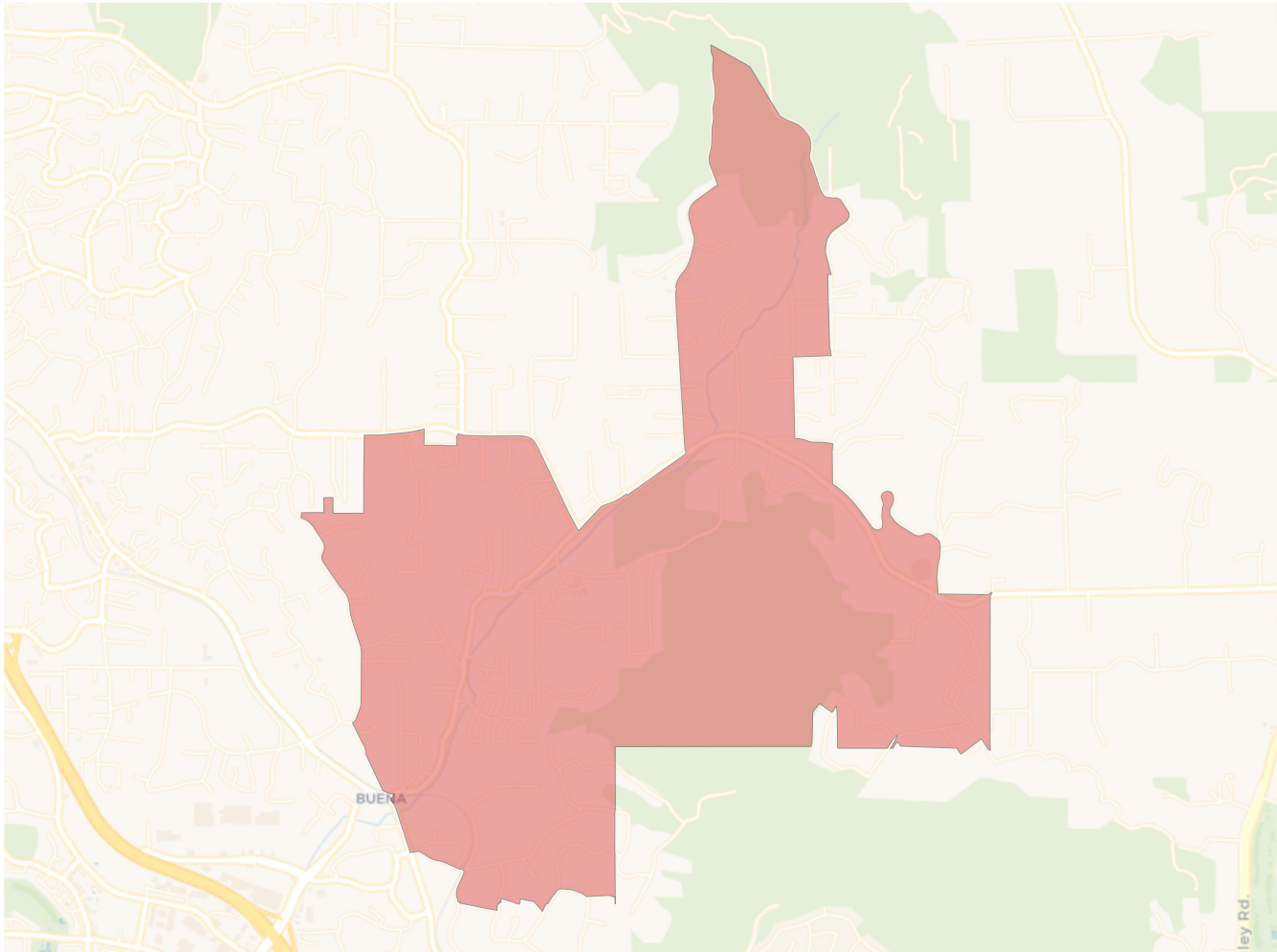


Citizen Voting Age Population

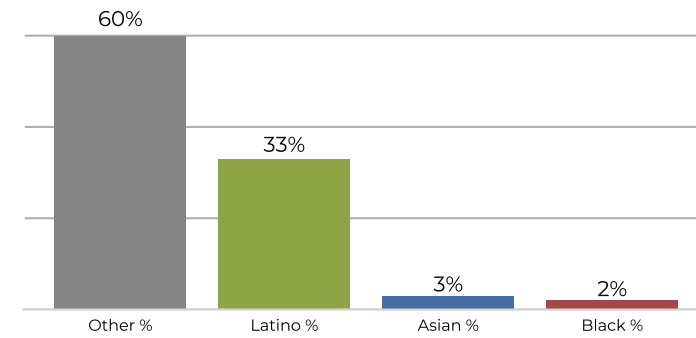


Population	Deviation	Deviation %	Other	Other %	Latino	Latino %	Asian	Asian %	Black	Black %
3,833	31	0.8%	2,745	71.6%	922	24.1%	127	3.3%	39	1.0%
Total CVAP	Other CVAP	Other CVAP %	Latino CVAP	Latino CVAP %	Asian CVAP	Asian CVAP %	Black CVAP	Black CVAP %		
2,957	2,332	78.9%	444	15.0%	102	3.4%	79	2.7%		

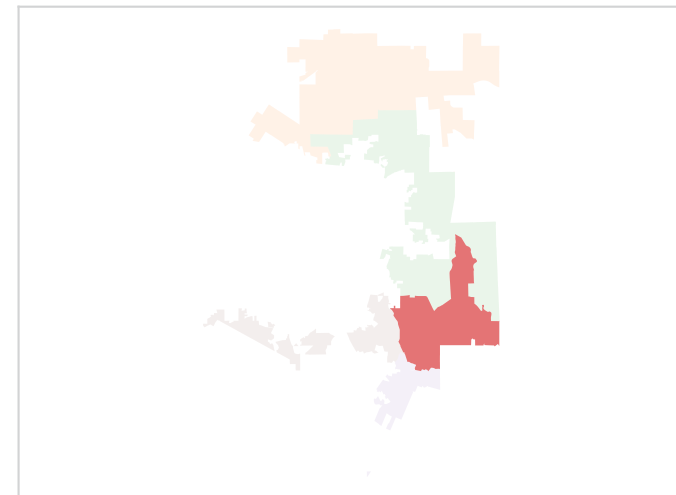
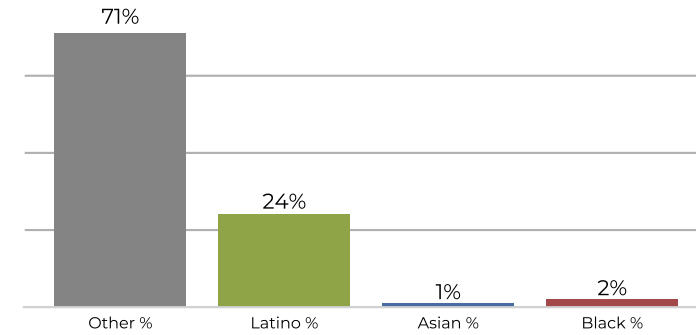
District C



2020 Census

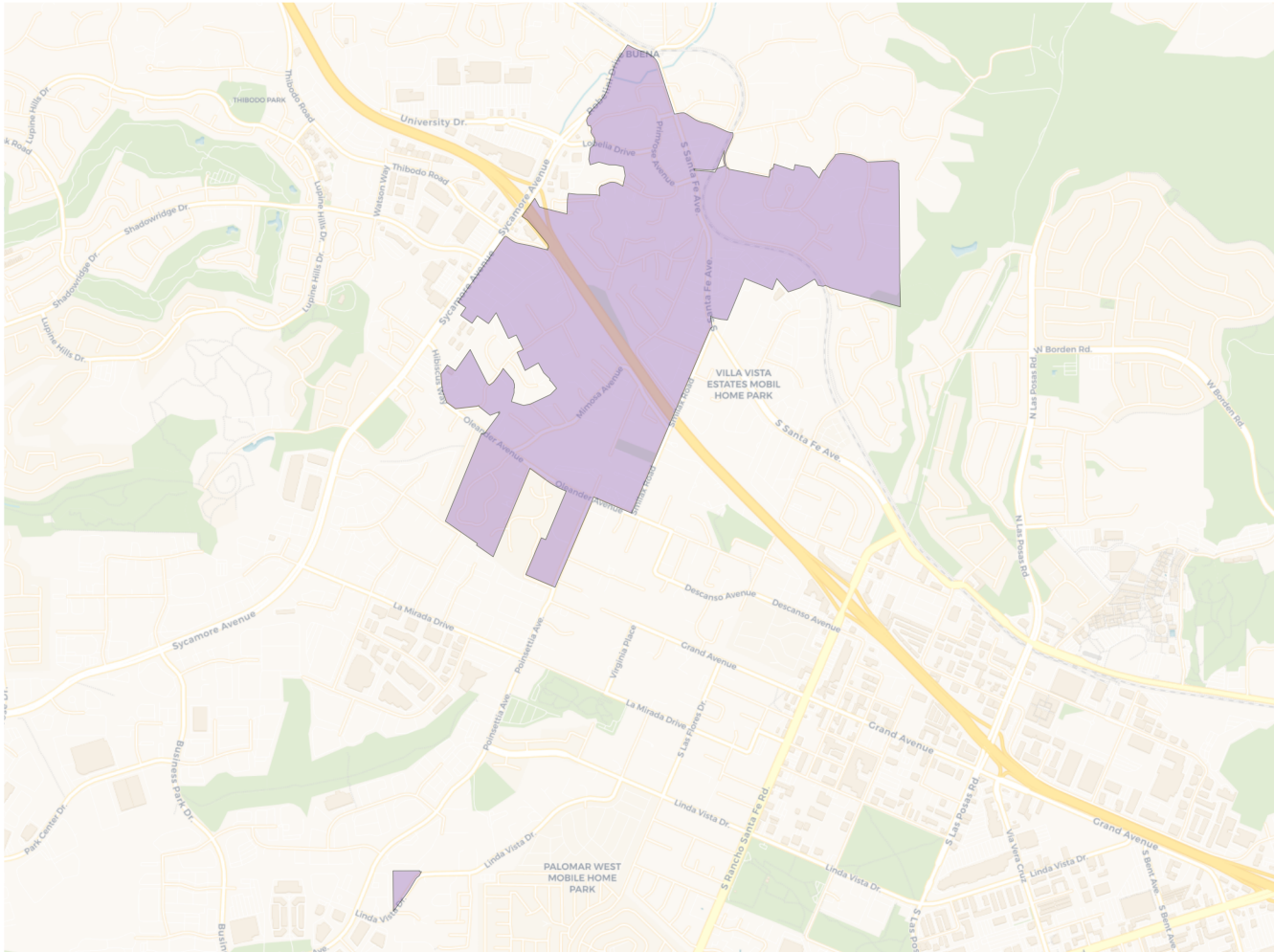


Citizen Voting Age Population

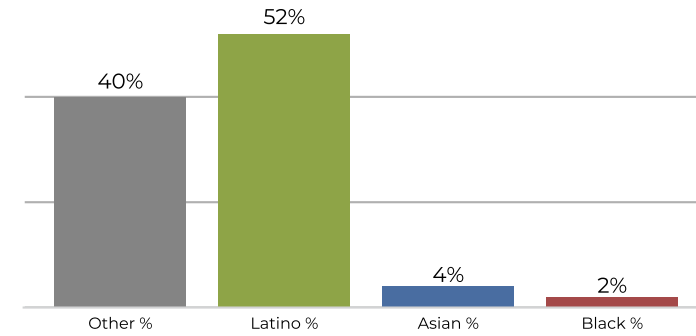


Population	Deviation	Deviation %	Other	Other %	Latino	Latino %	Asian	Asian %	Black	Black %
3,765	-37	-1.0%	2,274	60.4%	1,274	33.8%	135	3.6%	82	2.2%
Total CVAP	Other CVAP	Other CVAP %	Latino CVAP	Latino CVAP %	Asian CVAP	Asian CVAP %	Black CVAP	Black CVAP %		
2,816	2,018	71.7%	696	24.7%	36	1.3%	66	2.3%		

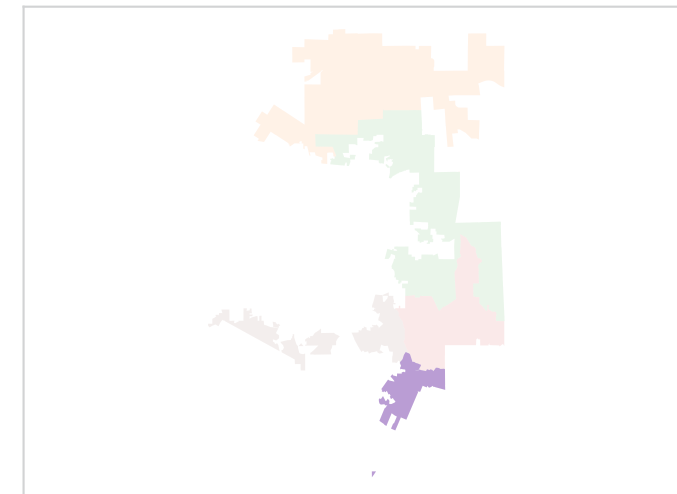
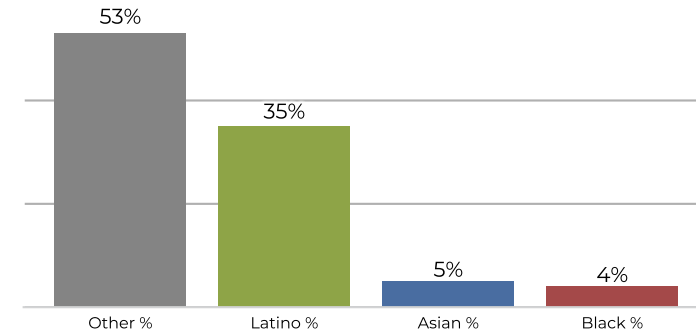
District D



2020 Census

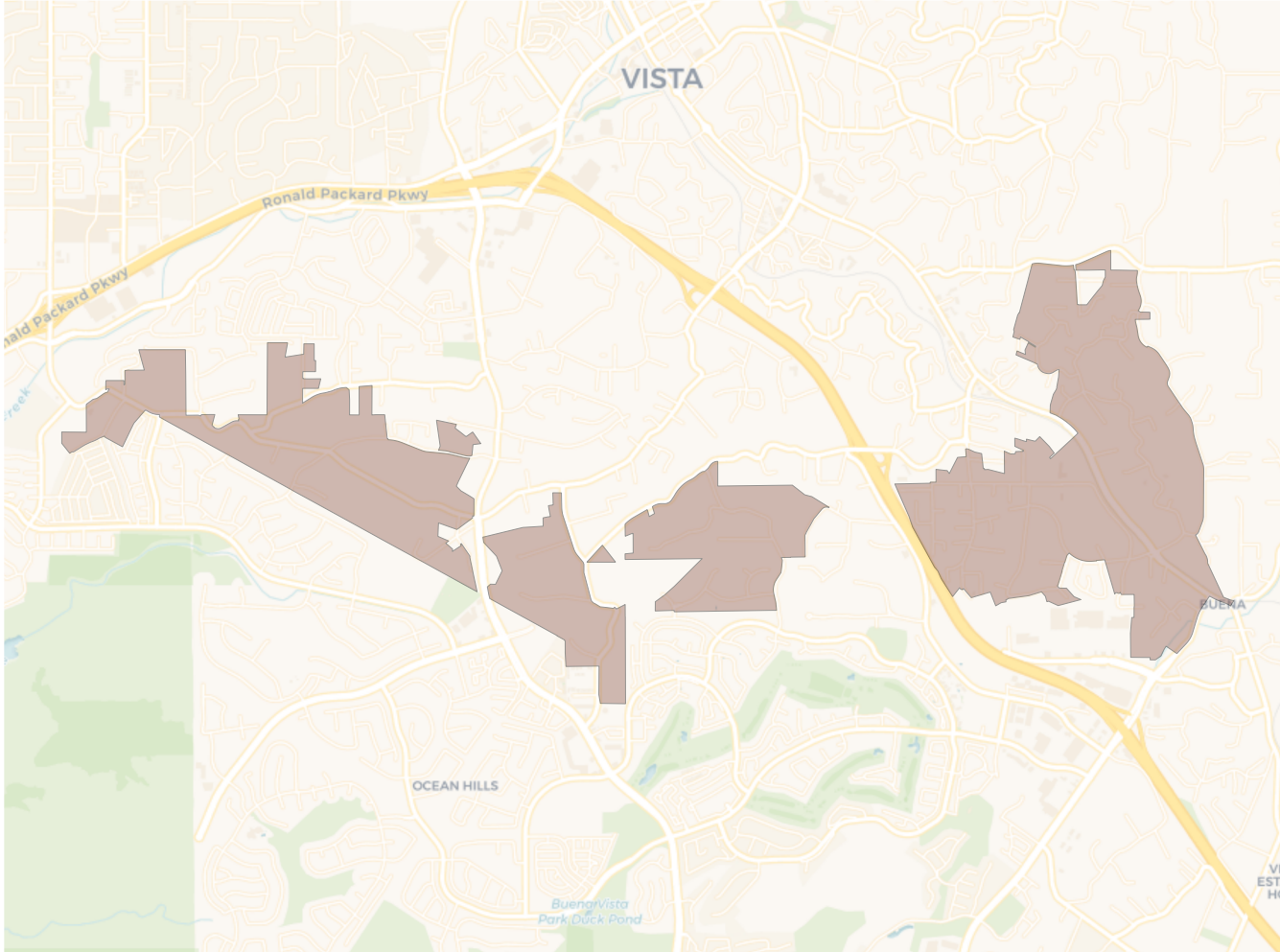


Citizen Voting Age Population

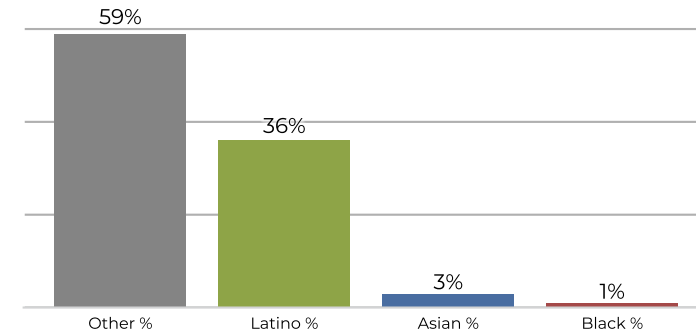


Population	Deviation	Deviation %	Other	Other %	Latino	Latino %	Asian	Asian %	Black	Black %
3,745	-57	-1.5%	1,532	40.9%	1,949	52.0%	171	4.6%	93	2.5%
Total CVAP	Other CVAP	Other CVAP %	Latino CVAP	Latino CVAP %	Asian CVAP	Asian CVAP %	Black CVAP	Black CVAP %		
2,486	1,336	53.7%	888	35.7%	142	5.7%	120	4.8%		

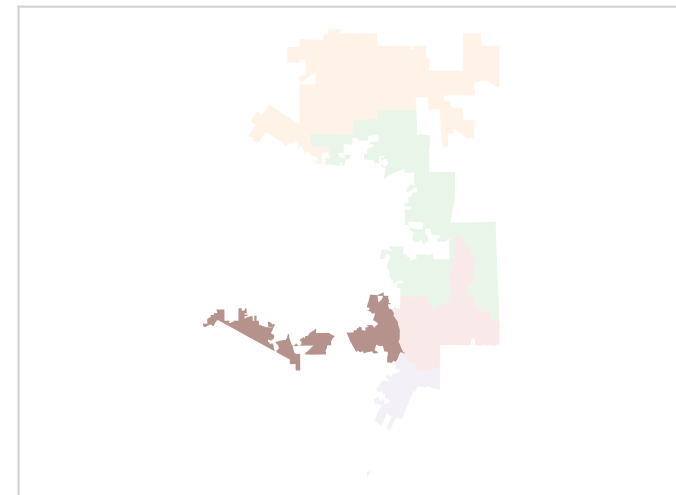
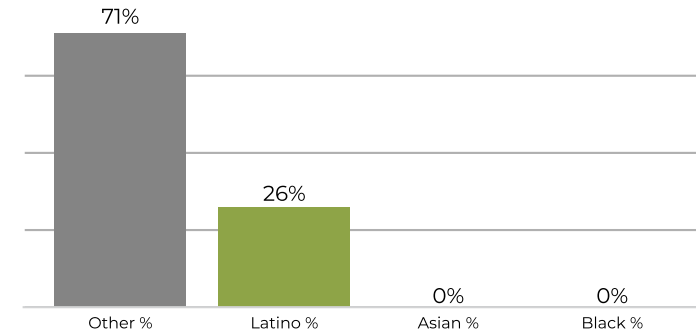
District E



2020 Census



Citizen Voting Age Population



Population	Deviation	Deviation %	Other	Other %	Latino	Latino %	Asian	Asian %	Black	Black %
3,861	59	1.6%	2,286	59.2%	1,406	36.4%	120	3.1%	49	1.3%
Total CVAP	Other CVAP	Other CVAP %	Latino CVAP	Latino CVAP %	Asian CVAP	Asian CVAP %	Black CVAP	Black CVAP %		
2,960	2,127	71.9%	788	26.6%	26	0.9%	19	0.6%		